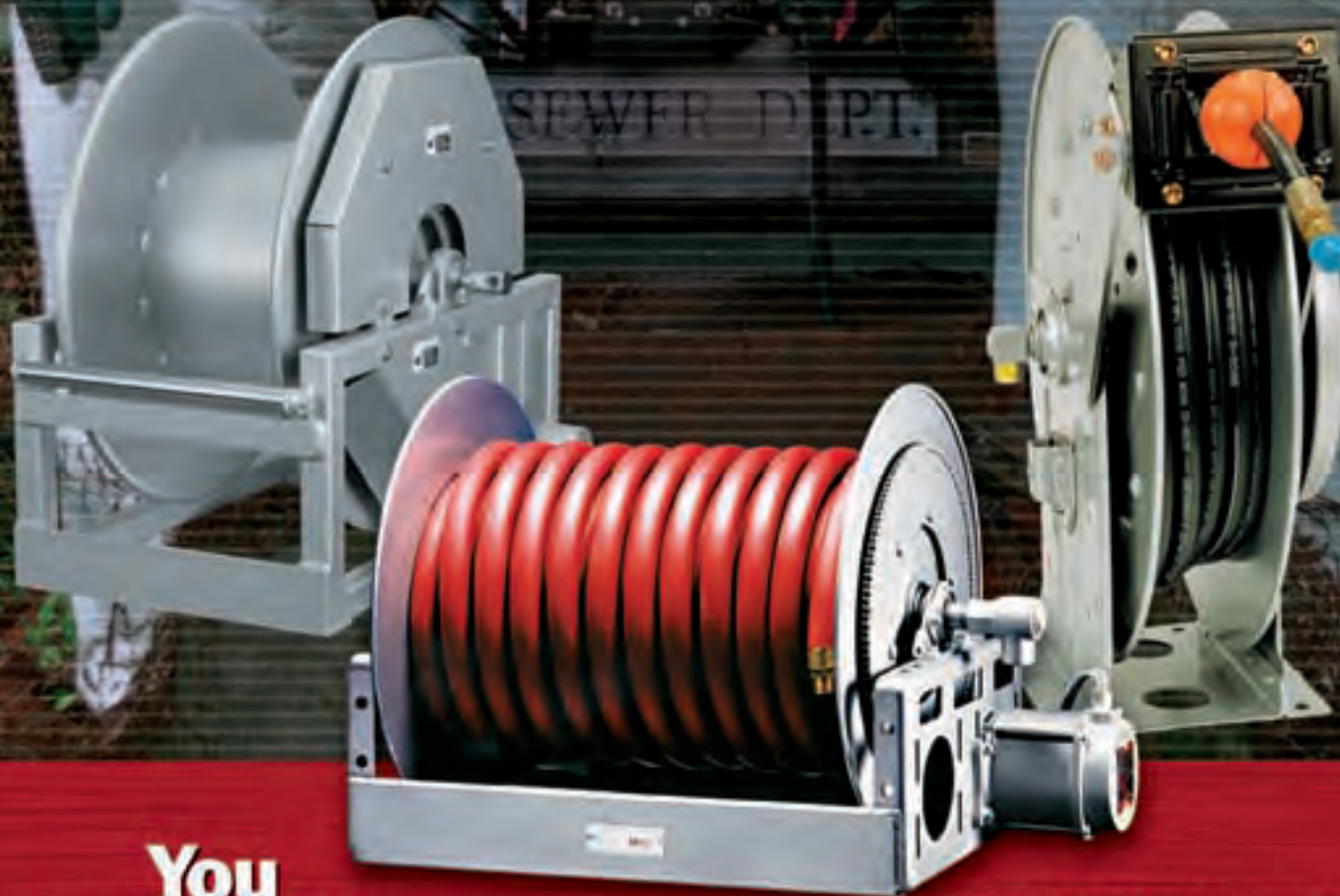


FAMILY OWNED AND OPERATED SINCE 1933

**Hannay Reels®**  
*The reel leader.*

# Pumper/Cleaner Reels

## For Sewer and Pipe Maintenance



**You  
Can't Buy  
A Better  
Reel.**

Jetting • Rodding • Steam Cleaning  
• Video Pipeline Inspection • Residential • Washdown  
• Sanitizing • Water Blasting • Vacuuming • Portable Toilet Cleaning

[www.hannay.com](http://www.hannay.com)

Pride in workmanship • Reels built to order • Consistent quality • Service with integrity • Value for your dollar

# HOW TO ORDER SEWER REELS

## Hannay Reels Order Worksheet

To order Hannay Reels, fill out this simple form (or a photocopy) and mail or fax to your Hannay Reels dealer.

### 1. Who's the reel for?

Company _____	Street Address _____		
Division _____	City _____	State _____	Zip _____
Contact _____	Telephone _____		Country _____
	Fax _____		Date _____

### 2. What is the reel for?

- ☐ **HOSE** (check one): ☐ Jetter hose ☐ Rodder hose  
☐ Live ☐ Single hose ☐ Other

Inside diameter: \_\_\_\_\_  
 Outside diameter: \_\_\_\_\_  
 Bend radius: \_\_\_\_\_  
 Hose length: \_\_\_\_\_  
 Hose weight: \_\_\_\_\_  
 Working pressure: \_\_\_\_\_

Type of product handled (check one):

- ☐ Water (specify type): \_\_\_\_\_  
☐ Other (specify type): \_\_\_\_\_

Hose inlet type (check one):

- ☐ 90° ☐ Straight  
☐ Steel

Hose outlet type (riser):

- Thread Size: \_\_\_\_\_  
 Thread (check one):  
☐ National Pipe Thread (NPT)  
☐ British Standard Pipe (BSP)  
☐ Other

Indicate your specifications \_\_\_\_\_  
 \_\_\_\_\_  
 \_\_\_\_\_  
 \_\_\_\_\_

### 3. What features does the reel need?

Check type of rewind:

☐ **MANUAL**

- ☐ Gear-drive crank  
☐ Chain-drive crank

☐ **POWER**

- ☐ Electric (voltage: \_\_\_\_\_)  
☐ Hydraulic

Check type of installation:

- ☐ Floor ☐ Wall ☐ Vehicle

Accessories (if any): \_\_\_\_\_

Roller Assemblies: \_\_\_\_\_

Check type of installation and roller position.



(top shown)

- ☐ Roller  
☐ Top  
☐ Bottom

### 4. Please note size and/or weight limitations for your installation

Length \_\_\_\_\_ Width \_\_\_\_\_  
 Height \_\_\_\_\_ Weight \_\_\_\_\_

For custom applications not found in our catalogs, call the Inside Sales Group at (518) 797-3791.



## Our Guarantee and Service Policy

Equipment manufactured by Hannay Reels, Inc. is guaranteed for two years from date of shipment when installed according to our instructions, given proper care, and used for the purpose for which it is designed.

Equipment which proves to be defective upon our inspection will be replaced free of charge, including freight to the customer. Our responsibility ceases upon delivery to any common carrier and we do not, unless previously instructed, insure shipments beyond point of delivery to such carrier. No material will be accepted for return without a return goods authorization. No allowance will be made for labor charges incurred in making exchanges, replacements or repairs.

Components (including hose and cable) which are manufactured by other vendors will be subject to the warranty terms of their own manufacturers. Also excluded from the general guarantee are normal wear items (including seals, motor brushes, and paint finish).

We reserve the right to modify or alter materials, dimensions, design and construction when necessary to improve the performance of the reel and/or accessories, or to meet delivery requirements.

**Failure to use a properly sized circuit breaker with any electric rewind motor will void warranty on motor.**

**Failure to use a flexible connector with any live hose reel will void warranty on swivel joint.**

We expressly disclaim any liability for damage or injuries resulting from the use, operation, service, maintenance or failure of equipment.

## Paint Notice

To meet the requirements and performance of vehicle and OEM apparatus paints we recommend our reels be painted with the same or equal paint as used on the specific apparatus the reel is being mounted on.

Hannay Reels will supply any model or custom reel or part with an automotive primer or rust preventative oil finish upon request, allowing application of final coating at your facility. Or at additional cost Hannay can prime / pre-paint all material before final assembly.

In today's regulatory environment this would be the most cost-effective way to meet your finishing standards.

Optional finishes are available for various environmental conditions and should be discussed with the factory.

Standard finish is oven cured enamel. **High performance finishes for demanding and corrosive environments are available at an additional cost. Consult factory for specific requirements.**

## Return Goods Policy

All Hannay Reels are built to order. The parts and components are ordered or placed into production as soon as the order is written.

In order to keep the number of returned goods at a minimum, we ask that you use the Hannay Reels Order Worksheet and/or Accessories Order Form when specifying reels with us. These forms can also be found in our Ordering and Accessory Guide, H-0415-OA. **Be sure to include any size and/or weight limitations for your installation.**

In the event that an item does need to be returned for credit, repair or replacement, prior approval **must** be obtained from Hannay Reels, Inc. Upon your request, we will fax a Return Goods Authorization form. A signed copy of this form **must** accompany the material when returned to us.

All material must be returned prepaid, unless otherwise noted on our Return Goods Authorization. No return will be accepted that has been damaged due to improper return packaging, tampered with or altered from its original condition. **Equipment specially built to customer specifications and requirements is not subject to cancellation or returnable for credit under any conditions.**

Our restocking and handling fee is a **MINIMUM** of 25% for standard catalog reels and parts.

**No** material will be accepted for credit when returned without permission. Orders for equipment incorporating variations from catalog listed items are special and are not subject to return.

**No** allowance will be made for labor or mileage charges incurred in making exchanges, replacements, or repairs.

## Mounting Hole Sizes

**N Series Reels** — 7/16" x 7/8" running front to back

**Pressed Frame Reels** — 7/16" x 7/8" running left to right

**Series 1500** — 13/32" round holes

**S E R I E S****N700****SPRING REWIND REELS****To handle 1/4" through 1/2" I.D. hose.**

- Standard N Series has a narrow frame and compact mounting base.
- Non sparking ratchet assembly.
- Declutching arbor to prevent damage from reverse winding.
- Standard inlet 90° balanced pressure swivel joint 1/2" female NPT threads.
- Standard outlet 1/2" female NPT threads.
- Standard Pressures to 3000 psi (207 bar) (available up to 10,000 psi 690 bar).
- Temperatures from -60° F to +250° F (-51° C to +121° C).
- Consult factory for other pressures & temps.
- 4-way roller assembly.
- Constant Tension is available – consult factory.



**Shown with  
Optional TR  
Roller Position  
and Hose Package**

**For Service Trucks:**

- Air/Water
- Steam

- Air Tools
- High Pressure

**Parts Drawing – ISO 79**

Model Number	Hose Capacity of Reel feet m.				Approx. Weight lb. kg.			Standard Roller Assy	Reel Dimensions*** inches mm.							
	I.D. (in) I.D. (mm)	1/4" 6	3/8" 10	1/2" 13	NET	UPS FedEx SHIP Wt.	Frt. SHIP Wt.		A	B	C	E	F	G	H	X
	O.D. (in) O.D. (mm)	5/8" 16	3/4" 19	7/8" 22												
N716-14-16-8C	— —	25 8	25 8	52 24	64* 29	87 39	N204	10 254	4 102	8 203	17.62 448	11.25 286	16.25 413	9.12 232	8 203	
N716-16-17C	— —	35 11	35 11	55 25	67* 30	90 41	N204	10 254	4 102	10.5 267	18.5 470	11.25 286	17 432	9.12 232	8 203	
N716-19-20J	— —	50 15	50 15	64 29	82* 37	99 45	N204	10 254	4 102	10.5 267	20.75 527	11.25 286	20 508	10.62 270	8 203	
N716-23-24-15.5G	100 30	75 23	65 20	94 43	101* 46	129 59	N204	10 254	4 102	15.5 394	23.75 603	11.25 286	24 610	12.62 321	8 203	
N716-23-24-15.5J	— —	65 20	65 20	79 36	86* 39	114 52	N204	10 254	4 102	15.5 394	23.75 603	11.25 286	24 610	12.62 321	8 203	
N716-25-26-15.5B	— —	75 23	75 23	90 41	— —	125 57	N204	10 254	4 102	15.5 394	25.25 641	11.25 286	26 660	13.62 346	8 203	
N718-25-26-15.5G	— —	100 30	100 30	96 44	— —	131 59	N206	12 305	6 152	15.5 394	25.25 641	13.25 337	26 660	13.62 346	10 254	

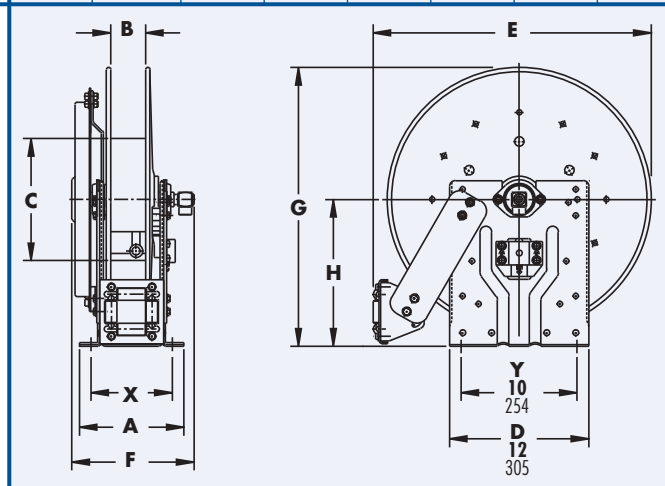
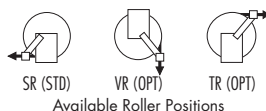
**Notes:**

1. Specifications subject to change.
2. Reel models and capacities shown are for standard drag applications; for vertical lift applications consult factory.
3. Other sizes, from standard components, available on request.
4. **Finish:** refer to Page 3.
5. **Be sure to check dimensions and weights prior to ordering.**

**NOTICE:** A Flexible Connector must be used between the inlet pipe and the inlet swivel joint.

\* Dimensional weight may apply when shipped as a parcel package (via FedEx or UPS Ground).

\*\*\* x,y indicate mounting holes.





Electric Rewind  
Standard Configuration Shown

### For:

- High Pressure
- Steam Cleaning
- Water
- Air



Optional External  
Mounting Brackets part  
no. 9906.0025.  
Add 2-1/2" to the X  
dimensions shown in  
the chart.

# 1500

## MANUAL OR POWER REWIND REELS

To handle single 1/4" through 5/8" I.D. hose.

- Lightweight compact reels designed for long lengths of hose in manual and power rewind.
- Direct crank rewind is permanently attached.
- Chain and sprocket drive powered by electric, hydraulic, or compressed air motor.
- Manual reels include: cam-lock drag brake, spring actuated pin lock.
- Standard inlet 90° ball bearing swivel joint 1/2" female NPT threads.
- Standard outlet 1/2" female NPT threads.
- Optional Rollers: Specify roller position when ordering.
- Pressures to 3000 psi (207 bar)
- Temperatures from +20° F to +400° F (-7° C to +204° C).
- Consult factory for other pressures & temps.

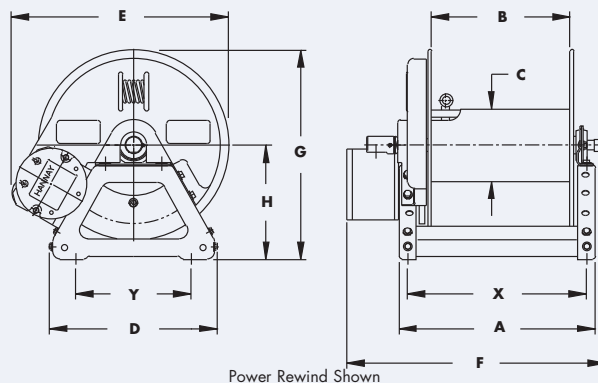
### Parts Drawing – ISO 90 (power); ISO 179 (manual)

Model Number	Hose Capacity of Reel feet m.					Approx. Weight Crank Rewind <sup>3</sup> lb. kg.			Reel Dimensions*** inches mm.						
	I.D. (in) I.D. (mm)	1/4" 6	3/8" 10	1/2" 13	5/8" 16	NET	UPS FedEx SHIP Wt.	Freight SHIP Wt.	A	B	E CRANK	E POWER	F CRANK	F POWER	X
	O.D. (in) O.D. (mm)	5/8" 16	3/4" 19	7/8" 22	1" 25										
For Power Rewind See Note 5															
1514-17-18		175 53	125 38	75 23	50 15	27 12	55* 25	62 28	11 279	6 152	16.5 419	19 483	20.5 521	16.5 419	9.5 241
1520-17-18		350 107	275 84	175 53	125 38	29 13	68* 31	64 29	17 432	12 305	16.5 419	19 483	26.5 673	22.5 572	15.5 394
1526-17-18		500 152	400 122	300 91	200 61	31 14	83* 38	66 30	23 584	18 457	16.5 419	19 483	32.5 826	28.5 724	21.5 546
1530-17-18		– –	500 152	375 114	275 84	33 15	94* 43	68 31	27 686	22 559	16.5 419	19 483	36.5 927	32.5 826	25.5 648
1536-17-18		– –	– –	475 145	350 107	35 16	110* 50	70 32	33 838	28 711	16.5 419	19 483	42.5 1080	38.5 978	31.5 800

### Notes:

- Specifications subject to change.
- Upon request, reels can be supplied with drum lengths other than shown.
- Weights shown in chart are for crank rewind models. ADD these amounts for power rewind models:
 

	Net (lbs.)	Ship (lbs.)	Net (kg.)	Ship (kg.)
Electric	18	18	8.2	8.2
Hydraulic	15	15	6.8	6.8
Air	15	15	6.8	6.8
- Dimension "F" is the overall length of standard model reels.
- When ordering power rewind models, prefix model number with:  
A = Air Rewind E = Electric Rewind HD = Hydraulic Rewind  
(Air rewind reels are supplied with control valve and 18" air hose; 12v and 24v DC rewind reels are supplied with switch and solenoid; 115v AC rewind reels are not supplied with switch but can be ordered separately; hydraulic rewind reels are not supplied with control valve.)
- Manual rewind available in RT or LB configurations only.
- Finish:** refer to Page 3.
- Be sure to check dimensions and weights prior to ordering.**
- Some roller options may prohibit the use of our molded chain guard.



**NOTICE:** A Flexible Connector must be used between the inlet pipe and the inlet swivel joint.

\* Dimensional weight may apply when shipped as a parcel package (via FedEx or UPS Ground).

\*\*\* x,y indicate mounting holes. See page 3.

**M O D E L****PW-2****MANUAL REWIND REEL****To handle single 3/8" I.D. hose.**

- Lightweight, compact and versatile, the PW Series designed for mobile and portable pressure wash equipment.
- Permanent direct crank rewind.
- Adjustable split bearing brake assembly.
- Standard inlet full flow swivel joint with 1/2" NPT fitting.
- Standard outlet 3/8" female NPT fitting
- Other sizes and/or threads can be furnished and must be specified.
- Pressures up to 4000 psi (276 bar).
- Product temperatures from +20°F to +400°F (-7°C to + 204°C).
- Consult factory for other temperatures.
- Specify mounting position when ordering mounting kits.
- Black powder coat finish.

Shown with optional  
PWK-200 mounting kit**For:**

- Pressure Washing
- Steam Cleaning
- Spray Operations
- Washdown

**Parts Drawing – ISO 193**

Model Number	Hose Capacity of Reel feet m.		Approx. Weight Crank Rewind lb. kg.		Reel Dimensions*** inches mm.									
	I.D. (in) I.D. (mm)	3/8" 10	NET	SHIP	A	B	C	D	E	F	G	H	X	Y
	O.D. (in) O.D. (mm)	3/4" 19												
PW-2		150 46	26 12	32* 15	9 229	6 152	6 152	4 102	16.75 425	17 432	18.25 464	10 254	5 127	2.75 70

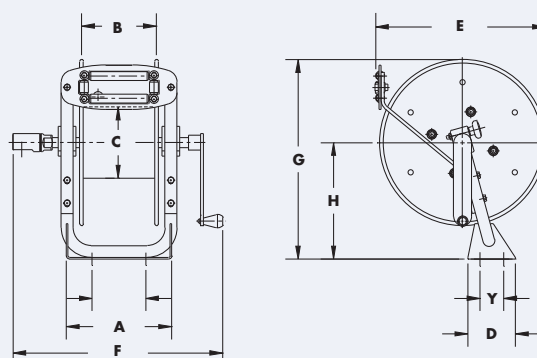
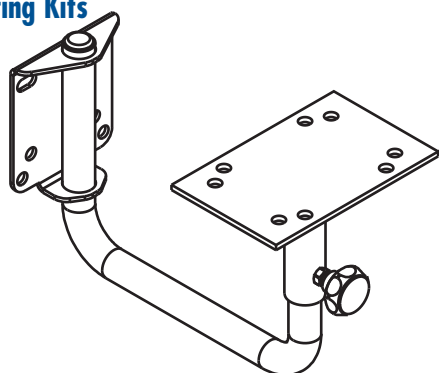
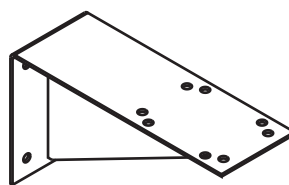
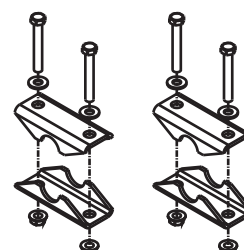
**Notes:**

1. Specifications subject to change.

2. **Finish:** refer to Page 3.3. **Be sure to check dimensions and weights prior to ordering.****NOTICE:** A Flexible Connector must be used between the inlet pipe and the inlet swivel joint.

\* When shipped as a parcel package (via FedEx or UPS Ground).

\*\*\* x,y indicate mounting holes.

**Mounting Kits****PWK-400**  
Wall mount with pivot**PWK-200**  
Wall mount**PWK-300**  
For Round tubing mount



# AT1100/AT1200

## PORTABLE HOSE REELS ON WHEELS

To handle 3/8" through 1" I.D. hose.

- Continuous flow reels with swivel joint inlet, fluid hub, outlet riser.
- Standard with pneumatic tires and cam-lock brake.
- Direct crank rewind is permanently attached.
- One-piece foot, and removable steel handlebar.
- GH Prefix to model # (e.g. GH1100, GHAT1200) includes garden hose thread on outlet, 5' lead-in hose, hose end clips.
- Consult factory for other pressures & temps.
- Optional folding handle – for compact storage.

**Model AT1100** – Standard inlet 90° ball bearing swivel joint 1/2" female NPT threads.

- Standard outlet is 1/2" female NPT threads.
- Pressures to 3000 psi (207 bar).
- Temperatures from +20° F to +400° F (-7° C to +204° C).

**Model AT1200** – Standard inlet 90° balance pressure swivel joint 1" female NPT threads.

- Standard outlet is 1" female NPT threads.
- Operates at pressures to 1000 psi (69 bar).
- Temperatures from -40° F to +250° F (-40° C to +121° C).



GHAT 1200  
Configuration  
Shown

AT1100  
Configuration  
Shown with  
Optional  
Folding  
Handle

For:

- Washdown
- Grounds Maintenance
- Home Use

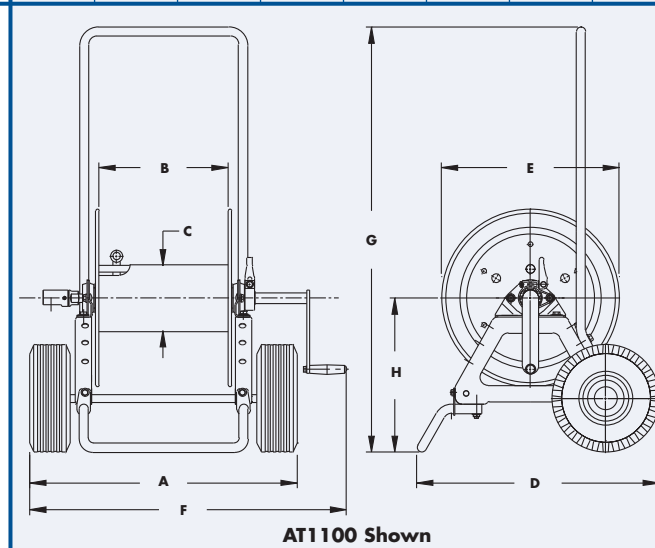
### Parts Drawing – AT1100–ISO 48; GHAT1200–ISO 87

Model Number	Hose Capacity of Reel feet m.						Approx. Weight lb. kg.		Reel Dimensions inches mm.							
	I.D. (in)	3/8"	1/2"	5/8"	3/4"	1"	NET	SHIP	A	B	C	D	E	F	G	H
	I.D. (mm)	10	13	16	19	25										
	O.D. (in)	3/4"	7/8"	1"	1-9/32"	1-9/16"										
	O.D. (mm)	19	22	25	33	40										
AT1100		275 84	175 53	125 38	– –	– –	47 21	85* 39	21.5 546	12 305	6 152	22 559	16.5 419	24.62 625	39 991	13.81 351
AT1200		– –	350 107	250 76	150 46	100 30	86 39	125* 57	24.88 632	11.5 292	8 203	23 584	22.75 578	26.5 673	40 1016	17.25 438

#### Notes:

1. Specifications subject to change.
2. **Finish:** refer to Page 3.
3. **Be sure to check dimensions and weights prior to ordering.**

\* Dimensional weight may apply when shipped as a parcel package (via FedEx or UPS Ground).  
Some assembly required.



AT1100 Shown

Hannay Reels, Inc. Phone 518-797-3791 Toll Free 1-877-GO REELS (467-3357)

FAX 1-800-REELING (733-5464) USA or FAX 518-797-3259 (International) www.hannay.com reels@hannay.com

**S E R I E S****6000****MANUAL OR POWER  
REWIND REELS****To handle single 1/2" through 1" I.D. hose.**

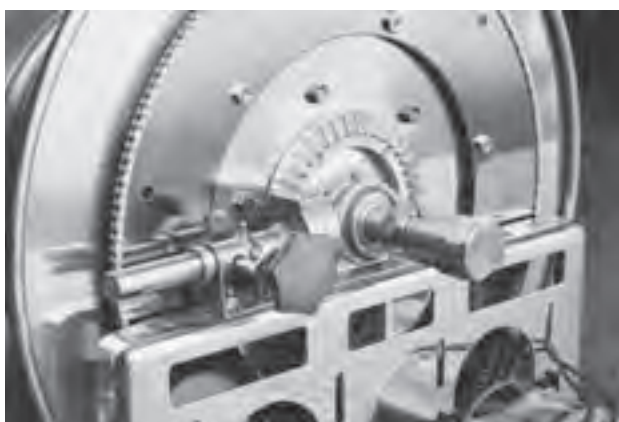
- Choose gear-driven crank rewind or chain and sprocket drive powered by an electric, hydraulic or compressed air motor.
- Crank rewind reels supplied with pinion brake, power rewind reels with a comet brake.
- Standard inlet a 90° ball bearing swivel joint 1" female NPT threads.
- Standard outlet 1" female NPT threads.
- Standard inlet, outlet riser and hub assembly are steel. Optional bronze or aluminum swivel joint and stainless steel hub assembly and riser, are available.
- Optional Rollers may be purchased.
- Pressures to 1000 psi (69 bar).
- Temperatures from -60° F to +250° F (-51° C to +121° C).
- Consult factory for other pressures & temps.
- Chainguard available upon request, must be specified.



**Electric Rewind  
Standard  
Configuration  
Shown**

**For:**

- Water Supply
- Suction/Transfer
- Spray Operations

**Optional Auxiliary Rewind**

**Ring and pinion shaft rewind unit with  
removable crank handle**



**Shown with optional Assembly C Roller  
Top Wind**





## Parts Drawing – ISO 84

Model Number	Hose Capacity of Reel feet m.				Approx. Weight Crank Rewind <sup>3</sup> lb. kg.		Reel Dimensions*** inches mm.									
	I.D. (in) I.D. (mm)	1/2" 13	3/4" 19	1" 25	NET	SHIP	A	B	D	E	F CRANK	F POWER	G	H	X	Y
	O.D. (in) O.D. (mm)	7/8" 22	1-9/32" 33	1-9/16" 40												
6024-19-21		235 72	125 38	60 18	85 39	127 58	21 533	15.5 394	20.5 521	18.75 476	25.38 645	28.5 724	21.5 546	12.12 308	13 330	16.75 425
6032-19-21		350 107	200 61	100 30	102 46	144 65	29.5 749	24 610	20.5 521	18.75 476	33.88 861	37 940	21.5 546	12.12 308	21.5 546	16.75 425
6024-23-24		450 137	185 56	100 30	92 42	134 61	21 533	15.5 394	20.5 521	22.75 578	25.38 645	28.5 724	21.5 597	12.12 308	13 330	16.75 425
6030-23-24		— —	250 76	150 46	105 48	147 67	27.5 699	22 559	20.5 521	22.75 578	31.88 810	35 889	23.5 597	12.12 308	19.5 495	16.75 425
6038-23-24		— —	350 107	200 61	120 54	162 73	35 889	29.5 749	20.5 521	22.75 578	39.38 1000	42.5 1080	23.5 597	12.12 308	27 686	16.75 425
6016-25-26		285 87	100 30	60 18	88 40	130 59	13 330	7.5 191	25.5 648	24.75 629	17.38 441	20.5 521	27.88 708	15.5 394	7.75 197	21.75 552
6022-25-26		500 152	200 61	100 30	100 45	142 64	19 483	13.5 343	25.5 648	24.75 629	23.38 594	26.5 673	27.88 708	15.5 394	11 279	21.75 552
6028-25-26		— —	300 91	200 61	113 51	155 70	25.5 648	20 508	25.5 648	24.75 629	29.88 759	33 838	27.88 708	15.5 394	17.5 445	21.75 552
6018-30-31		450 137	235 72	135 41	101 46	151 68	15 381	9.5 241	25.5 648	28.75 730	19.38 492	22.5 572	29.88 759	15.5 394	7 178	21.75 552
6024-30-31		— —	400 122	200 61	113 51	163 74	21 533	15.5 394	25.5 648	28.75 730	25.38 645	28.5 724	29.88 759	15.5 394	13 330	21.75 552
6028-30-31		— —	500 152	265 81	121 55	171 78	25.5 648	20 508	25.5 648	28.75 730	29.88 759	33 838	29.88 759	15.5 394	17.5 445	21.75 552
† 6030-30-31		— —	550 168	300 91	125 57	175 79	27.5 699	22 559	25.5 648	28.75 730	31.88 810	35 889	29.88 759	15.5 394	19.5 495	21.75 552
† 6028-33-34		— —	600 183	350 107	129 59	179 81	25 635	20 508	31.5 800	31.75 806	29.62 752	32.75 832	33.62 854	17.75 451	17.5 445	27.75 705

### Notes:

Specifications subject to change.

- Upon request, reels can be supplied with drum lengths other than shown and with disc sizes in other diameters.
- Dimensions shown for reels up to and including 30-31 disc size reflect pressed frames. All others are rollformed channel frames.
- Weights shown in chart are for crank rewind models. ADD these amounts for power rewind models:

	Net (lbs.)	Ship (lbs.)	Net (kg.)	Ship (kg.)
Electric 1/2 HP	40	40	18.1	18.1
Hydraulic	20	20	9.1	9.1
Air	20	20	9.1	9.1

- When ordering power rewind models, prefix model number with:  
A = Air Rewind EP = Electric Rewind (1/2 hp) HD = Hydraulic Rewind  
(Air rewind reels are supplied with control valve and 18" air hose; 12v and 24v DC rewind reels are supplied with switch and solenoid; 115v AC rewind reels are not supplied with switch but can be ordered separately; hydraulic rewind reels are not supplied with control valve.)

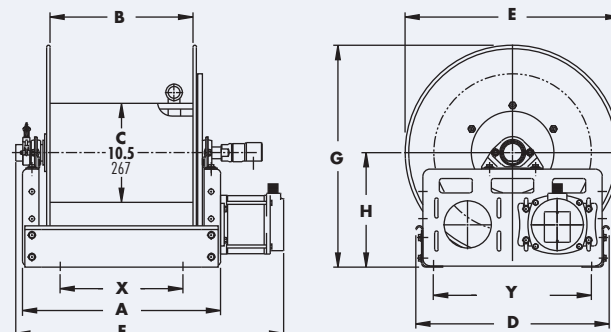
5. **Finish:** refer to Page 3.

6. **Be sure to check dimensions and weights prior to ordering.**

**NOTICE:** A Flexible Connector must be used between the inlet pipe and the inlet swivel joint.

\*\*\* x,y indicate mounting holes. See page 3

† Some applications require a clutch/reduction unit.



Power Rewind Shown

**S E R I E S****6100****POWER REWIND REELS****To handle single 3/8" through 1/2" I.D. hose.**

- Rugged construction.
- Strong spool to control hose expansion.
- Inlet - 1/2" Female NPT - 90° Ball Bearing swivel joint.
- Outlet - 1/2" Female NPT threads.
- Chain & Sprocket Drive.
- Hydraulic, Air and Electric motorized rewind.
- Steel-Hub Assembly - rated to 5000 psi.

**Options**

- Auxiliary Rewind.
- Roller assemblies.
- Chainguard
- Hose Packages



**Shown with optional Assembly C Rollers  
Optional Auxiliary Rewind and Hose**

**For:**

- Jetting
- Water Blasting
- Sewer Cleaning

**Remember Hannay Reels Added Values**

- Discs are heavy gauge with rolled edges to offer maximum strength.
- Frames are of a superior design.
- Bearings on each side of spool offer superior wear life and ease of any future maintenance.
- Swivel joints allow for ease of future repair/replacement. Seal design well proven in the industry. Pressure ratings to 10,000 psi.

**S E R I E S****6100**

Model Number	Hose Capacity of Reel feet m.			Reel Dimensions*** inches mm.									
	I.D. (in) I.D. (mm)	3/8" 10	1/2" 13	A	B	C	D	E	F	G	H	X	Y
	O.D. (in) O.D. (mm)	.68" 17.3	.89" 22.6										
For Power Rewind See Note 2													
6118-23-24		400 122	200 61	15.5 394	9.5 241	10.5 267	23.25 591	22.75 578	22.25 565	24 610	12.63 321	8.5 216	20.25 514
6122-23-24		600 183	300 91	19.5 495	13.5 343	10.5 267	23.25 591	22.75 578	26.25 667	24 610	12.63 321	12.5 318	20.25 514
6116-25-26		400 122	200 61	13.5 343	7.5 191	10.5 267	25.25 641	24.75 629	20.25 514	26 660	13.63 346	6.5 165	22.25 565
6118-25-26		475 145	300 91	15.5 394	9.5 241	10.5 267	25.25 641	24.75 629	22.25 565	26 660	13.63 346	8.5 216	22.25 565
6122-25-26		700 213	450 137	19.5 495	13.5 343	10.5 267	25.25 641	24.75 629	26.25 667	26 660	13.63 346	12.5 318	22.25 565
6116-30-31		600 183	300 91	13.5 343	7.5 191	10.5 267	29.25 743	28.75 730	20.25 514	31 787	16.63 422	6.5 165	26.25 667
6118-30-31		675 206	400 122	15.5 394	9.5 241	10.5 267	29.25 743	28.75 730	22.25 565	31 787	16.63 422	8.5 216	26.25 667

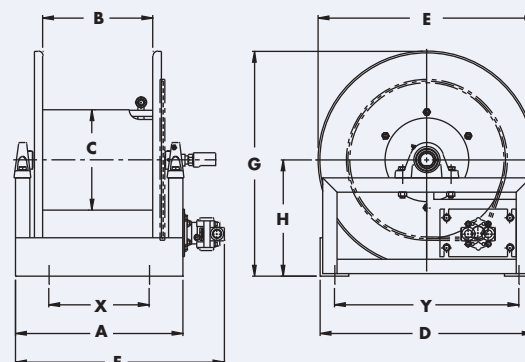
**Notes:**

Specifications subject to change.

1. Upon request, reels can be supplied with drum lengths other than shown and with disc sizes in other diameters.
2. When ordering power rewind models, prefix model number with:  
A = Air Rewind EP = Electric Rewind (1/2 hp) HD = Hydraulic Rewind  
(Air rewind reels are supplied with control valve and 18" air hose; 12v and 24v DC rewind reels are supplied with switch and solenoid; 115v AC rewind reels are not supplied with switch but can be ordered separately; hydraulic rewind reels are not supplied with control valve.)

3. **Finish:** refer to Page 3.4. **Be sure to check dimensions and weights prior to ordering.****NOTICE:** A Flexible Connector must be used between the inlet pipe and the inlet swivel joint.

\*\*\* x,y indicate mounting holes.



Power Rewind Shown



**S E R I E S****6200****POWER REWIND REELS****To handle single 3/4" through 1" I.D. hose.**

- Heavy-duty construction.
- Strong spool and frame to control hose expansion.
- Inlet – 1" FNPT 90° ball bearing swivel joint.
- Outlet 1" female NPT threads.
- Hydraulic motor rewind.
- #50 chain and sprocket drive.
- Steel hub assembly – rated to 3000 psi (207 bar).
- Assembly "A" roller on front of frame.
- Full chainguard.

**Options**

- 5000 psi working pressure.
- Roller assemblies.
- Direct drive hydraulic motor rewind.
- Hose Packages.



**Standard  
Configuration  
Shown**

**For:**

- **Rodding**
- **Water Blasting**
- **Sewer Cleaning**

**Remember Hannay Reels Added Values**

- Discs are heavy gauge with rolled edges to offer maximum strength.
- Frames are of a superior design.
- Bearings on each side of spool offer superior wear life and ease of any future maintenance.
- Swivel joints allow for ease of future repair/replacement. Seal design well proven in the industry. Pressure ratings to 10,000 psi.

**S E R I E S****6200**

Model Number	Hose Capacity of Reel <u>feet</u> m.			Reel Dimensions*** <u>inches</u> mm.									
	I.D. (in) I.D. (mm)	3/4" 19	1" 25	A	B	C	D	E	F	G	H	X	Y
	O.D. (in) O.D. (mm)	1.18" 29.9	1.43" 36.3										
6218-33-34-16		225 69	150 46	19 483	9.5 241	16 406	32.25 819	34.25 870	24 610	34 864	18.13 461	12 305	29.25 749
6222-33-34-16		300 91	200 61	23 584	13.5 343	16 406	32.25 819	34.25 870	28 711	34 864	18.13 461	16 406	29.25 749
6224-33-34-16		375 114	225 69	25 635	15.5 394	16 406	32.25 819	34.25 870	30 762	34 864	18.13 461	18 457	29.25 749
6218-39-40-16		350 107	250 76	19 483	9.5 241	16 406	39.5 1003	41.5 1054	25 635	40 1016	20.5 521	12 305	36.5 927
6220-39-40-16		400 122	300 91	21 533	11.5 292	16 406	39.5 1003	41.5 1054	27 686	40 1016	20.5 521	14 356	36.5 927
6222-39-40-16		500 152	350 107	23 584	13.5 343	16 406	39.5 1003	41.5 1054	29 737	40 1016	20.5 521	16 406	36.5 927
6224-39-40-16		600 183	400 122	25 635	15.5 394	16 406	39.5 1003	41.5 1054	31 787	40 1016	20.5 521	18 457	36.5 927
6220-45-46-16		— —	300 91	21 533	11.5 292	16 406	45.5 1156	47.5 1207	27 686	46 1168	23.5 597	14 356	42.5 1080
6224-45-46-16		900 274	500 152	25 635	15.5 394	16 406	45.5 1156	47.5 1207	31 787	46 1168	23.5 597	18 457	42.5 1080

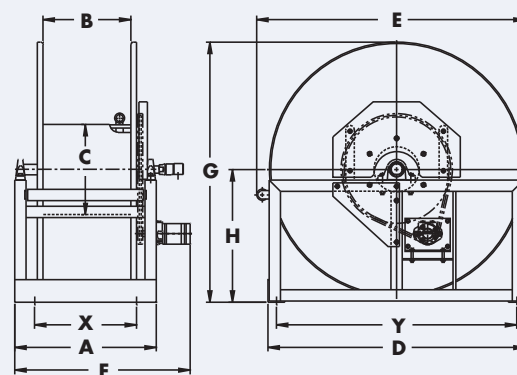
**Notes:**

Specifications subject to change.

1. Upon request, reels can be supplied with drum lengths other than shown and with disc sizes in other diameters.
2. When ordering power rewind models, prefix model number with HD=Hydraulic Rewind. Hydraulic rewind reels are not supplied with control valve.
3. **Finish:** refer to Page 3.

**4. Be sure to check dimensions and weights prior to ordering.****NOTICE:** A Flexible Connector must be used between the inlet pipe and the inlet swivel joint.

\*\*\* x,y indicate mounting holes.



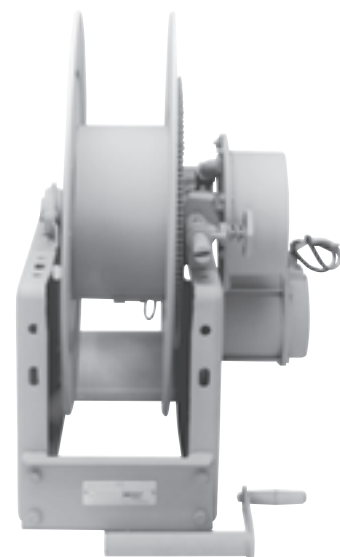
Power Rewind Shown

**S E R I E S**

# MANUAL AND POWER REWIND REELS

## To handle live electric cable.

- Gear-driven crank rewind.
- Chain and sprocket drive powered by electric, compressed air, or hydraulic motor.
- Auxiliary rewind and pinion brake standard.
- Consult factory for other brakes.
- 3-conductor 45 amp 600 volt collector assembly with #8 gauge wiring.
- Double brushes per circuit. Brushes are copper graphite, copper alloy rings.
- Additional conductors or higher amperage (up to 100 amps) are available at extra cost, must be specified. (300 amps possible with custom design).
- Silver collector assemblies are available.
- Rollers and roller mounting brackets are accessory items. Specify roller position.
- Levelwind available, see pg 17.



**Series CR6600 (Power Rewind)**  
Standard Configuration shown

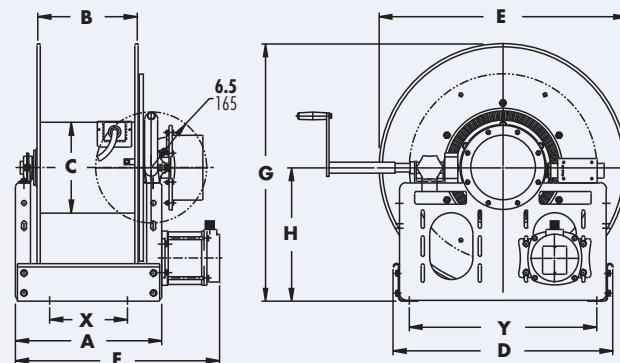
## Parts Drawing: Series CR6600 – ISO 45

Model Number	Cable Capacity of Reel <u>feet</u> m.						Approx. Weight Crank Rewind <u>lb.</u> kg.		Reel Dimensions*** <u>inches</u> mm.											
	GA./NO. OF CONDUCTORS						NET	SHIP	A	B	C	D	E CRANK	F PWR.	G CRANK	H PWR.	I CRANK	J PWR.	K CRANK	L PWR.
	14/3	12/3	10/3	8/3	12/4	10/4														
For Power Rewind See Note 5	O.D. (in) O.D. (mm)	.530 14	.600 15	.690 18	.750 19	.670 17														
CR6614-19-20		200 61	150 46	100 30	— —	— —	113 51	148 67	11 279	5.5 140	10.5 267	20.5 521	22 559	22 559	16 406	17.75 451	21.5 546	12.12 308	5.75 146	16.75 425
CR6614-23-24		— —	300 91	225 69	175 53	— —	120 54	155 70	11 279	5.5 140	10.5 267	20.5 521	23 584	23 584	16 406	17.75 451	23.5 597	12.12 308	5.75 146	16.75 425
CR6614-25-26		— —	350 107	250 76	200 61	— —	133 60	168 76	11 279	5.5 140	10.5 267	25.5 648	24.75 629	24.75 629	16 406	17.75 451	27.88 708	15.5 394	5.75 146	21.75 552

### Notes:

- Specifications subject to change.
- Upon request, reels can be supplied with drum lengths other than shown and with disc sizes in other diameters.
- Dimensions reflect pressed frames.
- Weights shown in chart are for crank rewind models. Add these amounts for power rewind models.  

Series CR6600	Net (lbs.)	Ship (lbs.)	Net (kg.)	Ship (kg.)
Electric	40	40	18.1	18.1
Hydraulic	20	20	9.1	9.1
Air	20	20	9.1	9.1
- When ordering power rewind models, prefix model number with:  
 A = Air Rewind    EP = Electric Rewind (Series CR6600)  
 HD = Hydraulic Rewind  
 (Air rewind reels are supplied with control valve and 18" air hose;  
 12v and 24v DC rewind reels are supplied with switch and solenoid;  
 115v AC rewind reels are not supplied with switch but can be ordered separately; hydraulic rewind reels are not supplied with control valve.)
- Be sure to check dimensions and weights prior to ordering.  
 \*\*\*x,y indicate mounting holes



Series CR6600 (Power Rewind)



# AT1300

## PORTABLE CABLE REEL ON WHEELS

- Direct crank rewind reel.
- Adjustable Cam-lock drag brake.
- 3 conductor 45 amp collector ring is standard.
- 6-foot power source lead of 10/3 cable.
- 15 amp 3-prong straight blade (twist lock optional).
- Additional conductors available, consult factory.
- Direct offset rewind crank.
- Folding handle available for compact storage.



Model AT1300

For:

- Video Pipeline Inspection



Reel with Optional Folding Handle

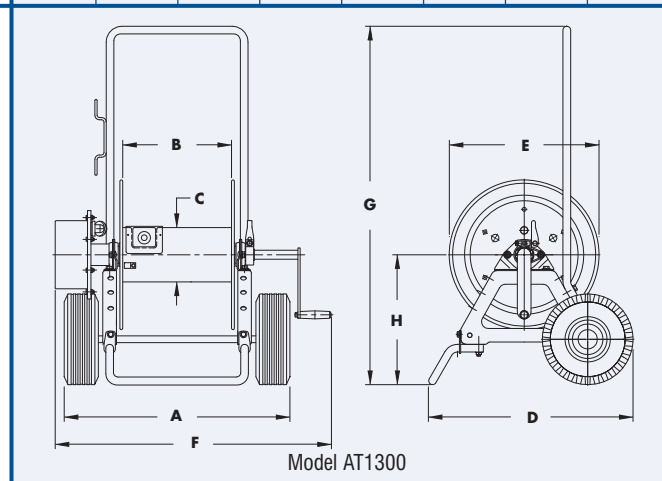
### Parts Drawing – ISO 189

Model Number	Cable Capacity of Reel <small>feet</small> <small>m.</small>				Approx. Weight <small>lb.</small> <small>kg.</small>		Reel Dimensions <small>inches</small> <small>mm.</small>							
	GA./NO. OF CONDUCTORS				NET	SHIP	A	B	C	D	E	F	G	H
	O.D. (in) O.D. (mm)	14/3 .53 14	12/3 .60 15	10/3 .69 18										
AT1300		500 152	400 122	300 91	70 32	102 46	24.75 629	12 305	6 152	23.5 597	16.5 419	31.75 806	42.5 1080	14.31 363

#### Notes:

1. Specifications subject to change.

2. Be sure to check dimensions and weights prior to ordering.



**M O D E L**

# H16-14-16

## PORTABLE HOSE REEL FOR PIPE/DRAIN CLEANING

**For residential & light commercial use.**

- 3,000 PSI Rating.
- Tension Brake.
- Velcro hose strap.
- All Steel Construction.
- Quality Swivel Joint.
- Manual rewind.
- Capacity: 200' of 1/4" I.D. Hose.
- Weight: 18 lbs. without hose.
- Dimensions: Height: 18.75"  
Width: 12.50" Depth: 14.75"



## O P T I O N A L A C C E S S O R I E S

## HG-15

HOSE GUIDE FOR  
MODEL 1500 REELS

A clean and efficient way to rewind hose for frequent and repetitive use applications.

- Simple design to rewind hose evenly and neatly every time
- No need to handle dirty or contaminated hose
- Powder-Coated bracket, stainless steel guide rods and nylon rollers assure long service life
- Designed for aftermarket installation

**Hose Guide Kit – HGK-15 Part No. 9956.2200**

- Kit includes HG-15 Hose Guide, handle grip, 2 stainless steel guide rods, 4 mounting blocks, steel mounting bracket set, and all mounting hardware.

**Hose Guide – HG-15 Part No. 9956.2000**

- Assembled black powder-coated Hose Guide and handle grip.
- You must specify reel model when ordering.



**1500 Series shown**



**view from back of HG-15**

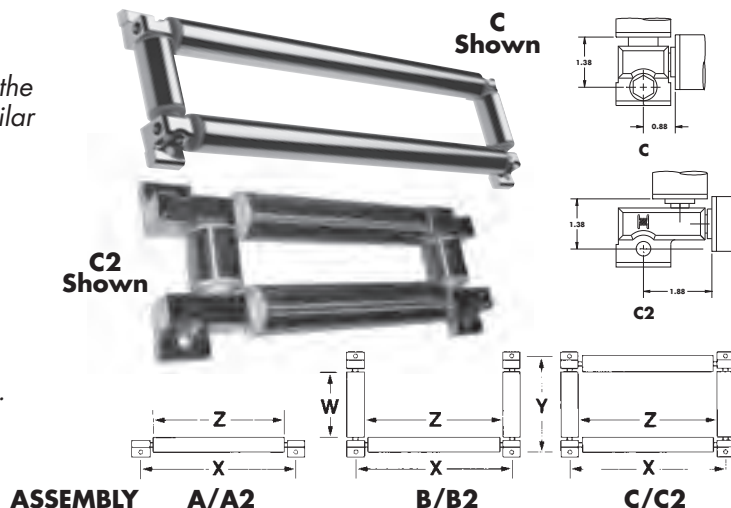
## Utility Hose Rollers

Stainless steel rollers and cast alloy brackets for use on the reel, on cabinet door openings, truck platforms and similar locations where sharp edges may cut or damage hose/cable.

**Specifications:** 1-1/2" diameter stainless steel roller, stainless steel rod, Delrin bearings, alloy brackets and required fasteners.

**To Order:** Specify Assembly A, B, or C, and give distance between **each pair** of mounting holes (Dimensions X and Y) and length of each roller (Dimensions W and Z). W=Vert. Roller Length, Z=Horiz. Roller Length.

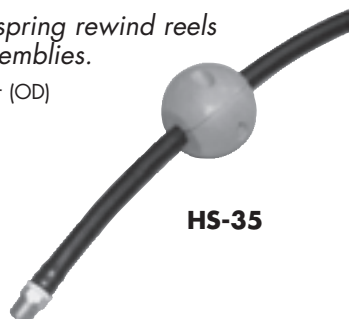
**Also available factory-installed on the reel.**



## Hose Stops

Recommended with spring rewind reels and 4-way roller assemblies.

Specify the outside diameter (OD) of your hose.



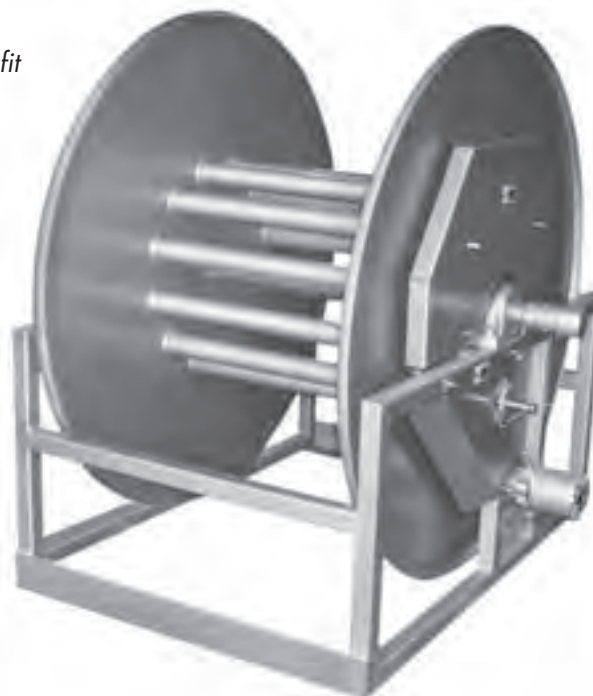
**HS-35**



# HANNAY REELS CUSTOM DEPARTMENT

**A complete separate custom facility on premises,  
devoted to the custom fabrication of reels for  
specific applications.**

*Working closely with you, the Hannay team of engineers provides hands-on structural design capabilities and detailed planning using sophisticated CAD technology. You also benefit from the efficiency, productivity, and responsiveness of our state-of-the-art manufacturing and shipping facilities.*



- Superior Design
- Finest Craftsmanship
- Best Delivery
- Supreme Value
- Premium Materials
- Optimum Performance
- Quality Brand Products
- Maximum ROI



## PUMPER/CLEANER REELS MADE THE HANNAY WAY

Since 1933, Hannay Reels has helped companies around the world improve the productivity, efficiency, and safety of their operations with hose and cable reels. We have engineered more custom hose reel solutions than any other manufacturer for pumper/cleaner applications – such as sewer and septic cleaning, portable toilet service, and industrial cleaning. We've also been doing it longer, giving us a level of expertise you won't find anywhere else.

As the leading maker of hose and cable reels, Hannay knows what you need in a service hose reel: durability, high-quality craftsmanship, and minimal routine maintenance. All Hannay reels are made to stringent specifications to fit your needs, so you know you're buying reels you can depend on year after year, even under the most demanding conditions.

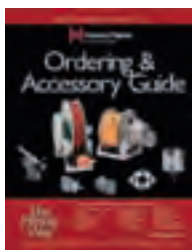


OEM's worldwide choose Hannay Reels for their superior designs and quality craftsmanship



### **Hannay Reels. The Industry Leader. The Quality Choice.**

**Hannay Reels, Inc.** Phone 518-797-3791 Toll Free 1-877-GO REELS (467-3357)  
FAX 1-800-REELING (733-5464) USA or FAX 518-797-3259 (International) [www.hannay.com](http://www.hannay.com) [reels@hannay.com](mailto:reels@hannay.com)



**Ordering &  
Accessory Guide**



**Hose Reels**



**Cable Reels**



**Pressure Wash  
and Spray Reels**

## ***You can trust The Reel Leader<sup>®</sup> for reels you can depend on.***

- Patented designs for industrial use
- Quality, heavy duty materials throughout
- Built by Craftsmen to meet your needs
- Custom and one-of-a-kind applications
- Little or no maintenance needed
- Long lasting value and dependability



Family owned and operated since 1933, Hannay Reels is the world leader in both OEM and aftermarket applications. Hannay offers thousands of standard hose reel and cable reel models, as well as unmatched custom capabilities. We can easily and affordably customize a reel to meet your exact specifications – built to last, delivered fast. Additional catalogs are available through your local Hannay Reels dealer or online at [www.hannay.com](http://www.hannay.com).



**Hannay Reels<sup>®</sup>**  
*The reel leader.*

553 State Route 143 • Westerlo, New York 12193  
Toll Free Phone: 1-**877**-GO-REELS • Toll Free Fax: 1-800-REELING

Email: [reels@hannay.com](mailto:reels@hannay.com)

Intl. Phone: 1-518-797-3791 • Intl. Fax: 1-518-797-3259

**[www.hannay.com](http://www.hannay.com)**



MADE IN U.S.A.