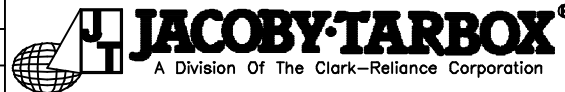


MATERIAL: SEE B/M
 DRAWN: TFK
 SCALE: NONE
 CHECKED: DEP
 DATE: 09/15/95

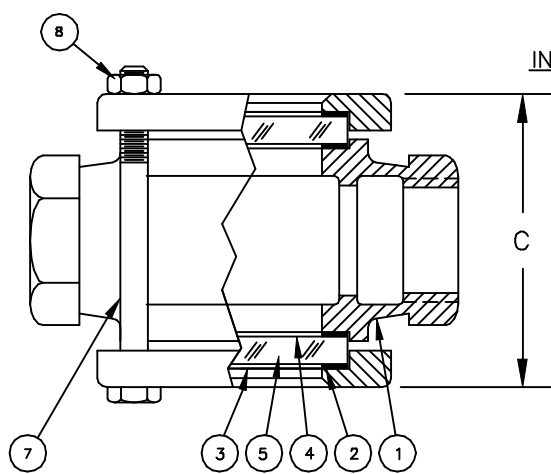


SIGHT FLOW INDICATOR
 STYLE 100-SFA, 200-SFA, 300-SFA

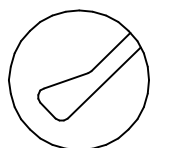
Section: T400
 Bulletin: T400.16
 Date: 12/01/00
 Supersedes: 11/10/98

150 ASME CLASS MODELS

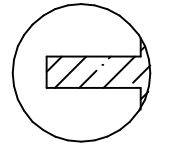
FILE NO.: T400-16.DWG



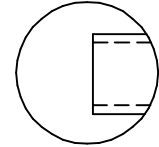
INDICATOR OPTIONS



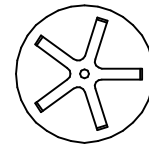
FLAPPER
 STYLE 100-SFA



PTFE FLUTTER



DRIP TUBE

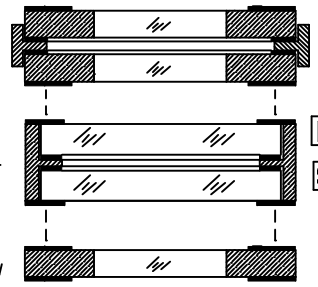


PTFE ROTOR
 STYLE 300-SFA

PARTS LIST				
PIECE NO.	NAME OF PART	QUAN.	MATERIAL	COMMENTS
1	BODY	1	SEE BELOW	
2	RETAINER	2	STEEL	
3	CUSHION	2	FIBER	
4	SEAL GASKET	2		
5	WINDOW	2	BOROSILICATE	
6	NUT	4	STEEL	
7	BOLT	4	STEEL	
8	INDICATOR	1		

THIS DRAWING AND ALL INFORMATION ON IT IS THE PROPERTY OF JACOBY-TARBOX, DIVISION OF THE CLARK-RELIANCE CORPORATION. IT IS CONFIDENTIAL AND IS GIVEN TO YOU FOR A LIMITED PURPOSE AND MUST BE RETURNED UPON REQUEST. NEITHER THIS DRAWING NOR ANY PART OF IT NOR ANY INFORMATION CONCERNING IT MAY BE COPIED, EXHIBITED OR FURNISHED TO OTHERS NOR MAY PHOTOGRAPHS BE TAKEN OF ANY ARTICLE FABRICATED OR ASSEMBLED FROM THIS DRAWING WITHOUT CONSENT OF THE CLARK-RELIANCE CORPORATION.

- OPTIONS
- DUAL UNIGLAS WINDOWS
 - FULL VIEW DUAL WINDOWS
 - UNIGLAS WINDOW



ASME CLASS PRESSURE/TEMP RATINGS

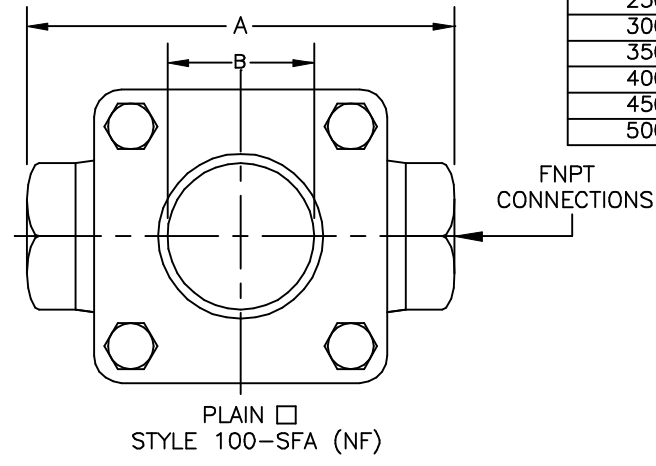
TEMP F	150 CLASS			
	STEEL	316 SS	BRONZE	IRON
-20 TO 100	285	275	225	200
150	270	260	225	200
200	260	240	210	190
250	245	230	195	175
300	230	215	180	165
350	215	205	165	150
400	200	195	150	140
450	185	180	N/R	N/R
500	170	170	N/R	N/R

STANDARD DESIGN MATERIALS:

- BODY: ASTM A216-WCB (CARBON STEEL)
- ASTM A351-CF8M (316 SS)
- ASTM B62 (BRONZE)
- ASTM A126 CLASS B (CAST IRON)

- RETAINER: ASTM A516 GR. 70 (STEEL)
- ASTM A216-WCB (STEEL)
- FASTENERS: A354-BD/A194-2H (STEEL)
- INDICATOR: 316 SS FLAP&DRIP, PTFE FLUTTER

304/316 SS TRIM AVAILABLE
 OPTIONAL ALLOYS FURNISHED UPON REQUEST



PIPE SIZE	DIMENSIONS						APPROX. WGT.	
	A		B		C		LBS.	KGS.
	IN.	mm	IN.	mm	IN.	mm		
1/8, 1/4, 3/8	3	76	27/32	21	3	76	3	1.4
1/2 & 3/4	3-3/4	95	1-1/4	32	4-3/4	121	4	1.8
1	4-1/4	108	1-7/32	31	5-1/2	140	6	2.7
1-1/4 & 1-1/2	5-1/2	140	2-7/32	56	7	178	13	5.9
2	6-1/4	159	2-1/2	64	9-7/8	251	17	7.7