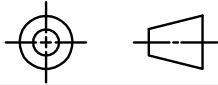
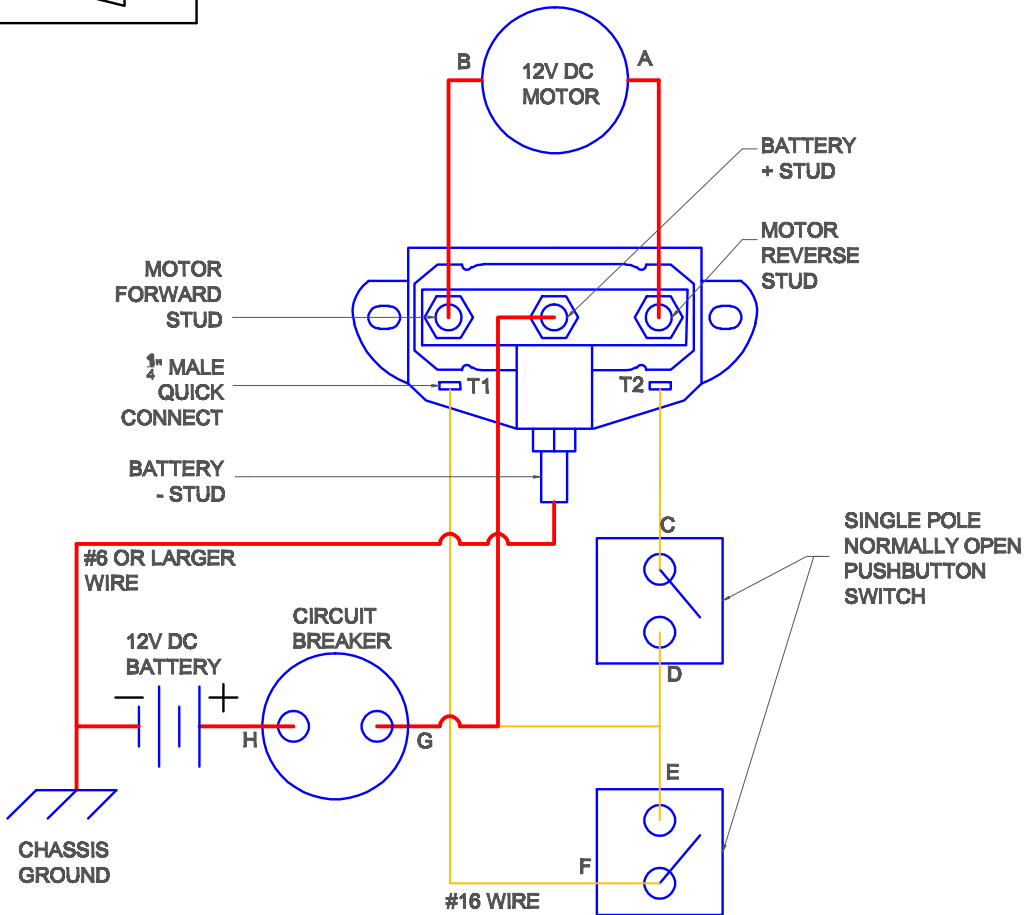


THIRD ANGLE PROJECTION



12V REVERSING SWITCH



Wiring Instructions

(Steps 1-4 use #6 or larger wire and steps 5-7 use #16 wire)

1. Connect motor wire (A) to Motor Reverse Stud and connect motor wire (B) to Motor Forward Stud
2. Connect battery positive to fuse (H)
3. Connect fuse (G) to Battery + Stud
4. Connect battery negative to Battery - Stud and chassis ground
5. Connect T2 to pushbutton (C)
6. Connect T1 to pushbutton (F)
7. Connect pushbutton (D) and (E) to Battery + Stud

THIS DOCUMENT IS THE PROPERTY OF HANNAY REELS, INC. AND CONTAINS PROPRIETARY INFORMATION. IT SHALL NOT BE DUPLICATED IN WHOLE OR IN PART, OR DISCLOSED TO OTHERS, WITHOUT THE EXPRESS WRITTEN CONSENT OF HANNAY REELS, INC.

UNLESS OTHERWISE SPECIFIED

DIMENSIONS ARE IN INCHES
TOLERANCES ON:

- 2 PL DECIMALS ± .02
- 3 PL DECIMALS ± .005
- ANGLES ± N/A
- FRACTIONS ± N/A

BREAK SHARP CORNERS AND REMOVE BURRS

MATERIAL:

xxx

DR.BY: RDD

DATE: 12/05/2007

CK.BY:

DATE: xx/xx/xx



553 State Route 143
P.O. Box 159
Westerlo, NY 12193-0159
Phone: (518) 797-3791
Toll Free: (877) 467-3357
Fax: (800) 733-5464
Int'l Fax: (518) 797-3259

TITLE:

12V Reversing Polarity Contactor

SH.	OF:	SCALE	SIZE	DWG.NO.:	REV.
1	1	1/1	B	RDD-0003	1