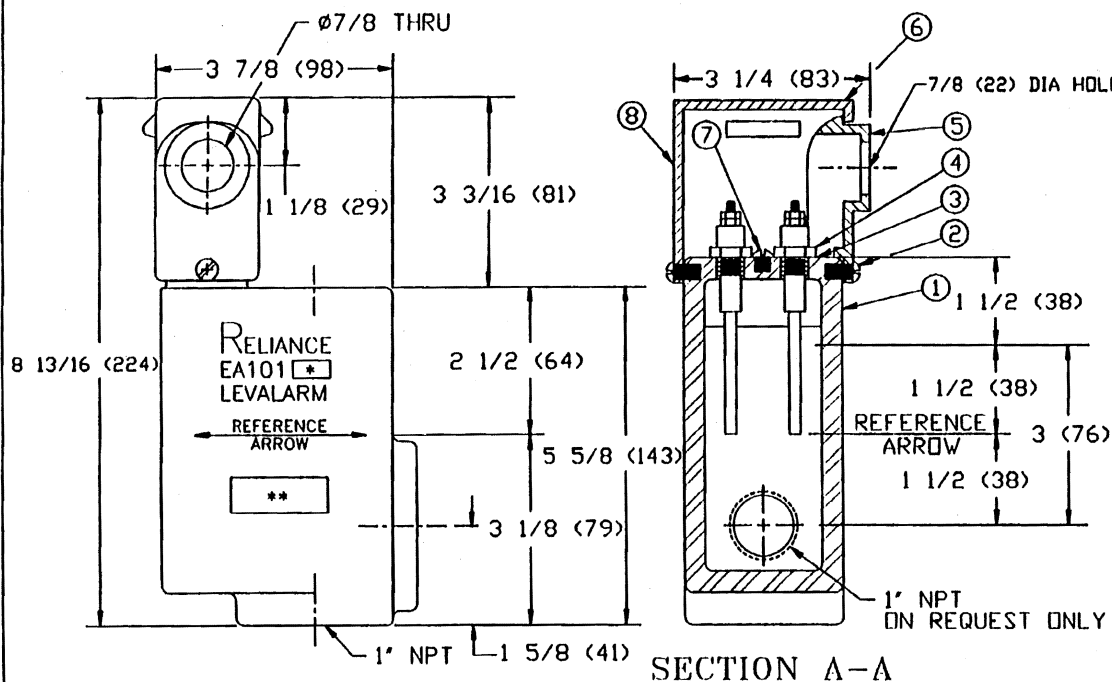
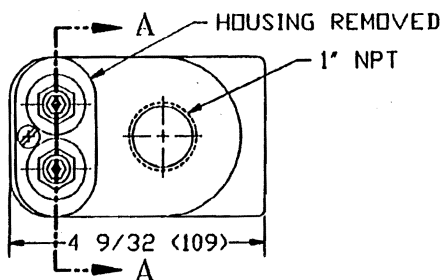


BILL OF MATERIAL

ITEM	P/N	QTY	DESCRIPTION	MAT'L	DWG NO
1	EA101D 1	1	BODY	STEEL	A-13764
2	X172993	2	RD HD MACH SCREW 12-24X3/8	STEEL	
3	WCM 13	2	ELECTRODE FITTING GASKET		
4	EA15 5T	2	ELECTRODE FITTING		
5	EA15R 22	1	CONDUIT BRACKET	ALUMINUM	B-8697
6	EA100 18	1	ELECTRODE FITTING HOUSING	ALUMINUM	B-8697
7	X172990	1	COMMON CONN. SCREW, 12-24X1/4	STEEL	
8	X174610	1	LEVALARM NAME PLATE	ALUMINUM	A-7863



NOTE ON APPLICATION:

THIS EA101 LEVALARM CAN BE USED FOR THE FOLLOWING CONTROL AND ALARM FUNCTIONS:

- A. WITH ONE PROBE AND ONE RELAY, EITHER:
 - 1. HIGH ALARM
 - 2. LOW ALARM
 - 3. FUEL CUTOFF
 - 4. LOW ALARM AND FUEL CUTOFF (SAME LEVEL)
- B. WITH TWO PROBES AND ONE RELAY
 - 1. PUMP CONTROL (FOR LEVEL DIFFERENTIALS UP TO 3")
- C. WITH TWO PROBES AND TWO RELAYS, EITHER:
 - 1. DUAL FUEL CUTOFF
 - 2. LOW ALARM AND FUEL CUTOFF (DIFFERENT LEVELS)

NOTE ON LETTERING:

- * STAMP "D" ON BODY (EA101D LEVALARM)
- ** PRESSURE BLOCK TO BE STAMPED:
350 WSP FOR EA101D LEVALARM STEAM SERVICE
1000 PSI FOR EA101D LEVALARM TANK SERVICE

LOCATE PROBE LEVELS WITH RESPECT TO REFERENCE ARROW

HYDROTEST: 1500 PSI

MATERIAL: SEE TABLE	CLARK-RELIANCE CORP. STRONGSVILLE, OHIO, U.S.A.	EA101D LEVALARM ASSEMBLY	DRAWING NUMBER:	REV.
DRAWN: BSL CHECKED:			B-8917	
SCALE: NONE DATE: 9/28/95	PART NO.: EA101D	TOLERANCE CLASS: N/A		
REV. 7 PER CDC 95-127/BSL				

BILL OF MATERIAL

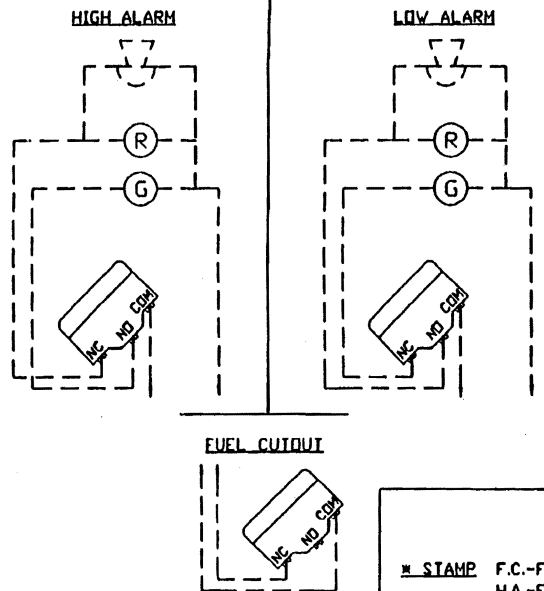
ITEM	PART #	QTY.	DESCRIPTION	MATERIAL	DWG. #
1	EA100D-1	1	BODY	STEEL	B-8837
2	EA100-23	1	SWITCH COVER	MONEL B127-58	B-8838
3	EA100-12	1	CONNECTOR ROD ASSEMBLY	STAINLESS STEEL 18-8	B-8838
4	EA100-13	1	MAGNET ASSEMBLY	ALNICO V NICKEL PLATED	B-8838
5	EA100-14X	1	SWITCH ASSEMBLY	-	B-8838
6	EA100R-27D	1	SWITCH HOUSING ASSEMBLY	STEEL	B-8838
7	EA100-21	1	LEVER PIN	STAINLESS STEEL 18-8	B-8838
8	EA100-17	1	NAME PLATE	ALUMINUM	B-25-59
9	X172910	1	RHMS 10-24 X 1/4	BRASS	-
10	C1-3	1	GASKET	STEEL	A-6534
11	X172372	4	CAP BOLT 1/2-13 X 2	STEEL A193 GR. B-7	-
12	F3S	1	FLOAT	STAINLESS STEEL A240 TP304	-
13	EA6-15	1	SWITCH INSULATOR	FIBRE	A-7577
14	X173260	2	METALLIC DRIVE SCREW U4 X 3/16	STEEL	-
15	X174280	2	SHAKEPROOF #6 LOCK WASHER	STEEL	-
16	X172860	2	R.H. SCREW & NUT 6-32 X 1	BRASS	-
17	X171700	2	COTTER PIN 1/32 X 1/2"	STAINLESS STEEL 18-8	-
18	X171501	4	HEAVY HEX NUT 1/2-13	STEEL A194 GR. 2H	-

NOTES: MICRO SWITCH, TYPE BZ-2RW82444-A2
 UNDERWRITER APPROVED
 FOR THE FOLLOWING RATINGS:
 5A-125,250, OR 480 VAC
 1/2A-125 VDC
 1/4A-250 VDC

STATIONARY SERVICE RATING

MAX PRESSURE:
 350 PSI AT 437° F
 650 PSI AT 200° F

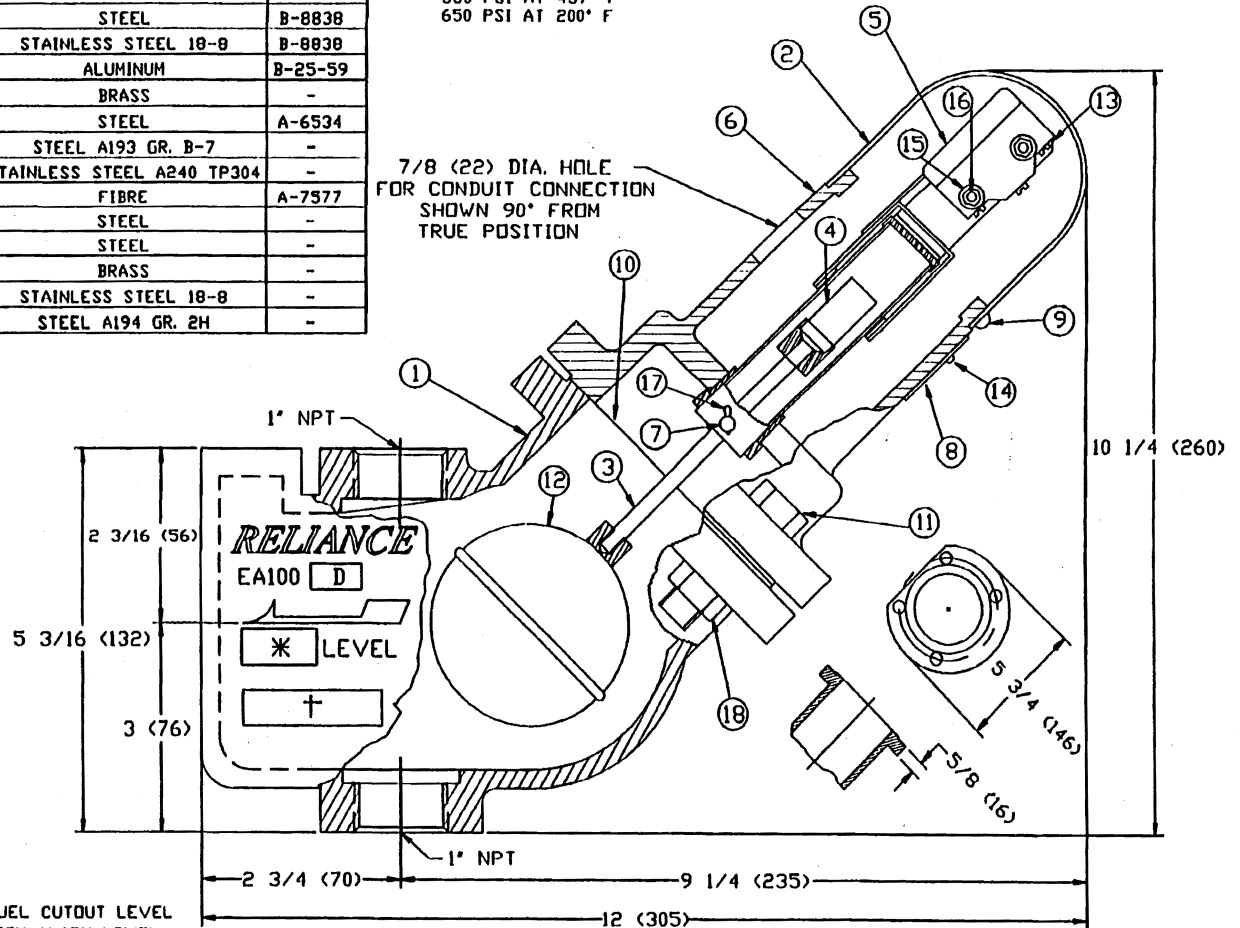
7/8 (22) DIA. HOLE
 FOR CONDUIT CONNECTION
 SHOWN 90° FROM
 TRUE POSITION



WIRING DIAGRAMS

* STAMP F.C.-FOR FUEL CUTOUT LEVEL
 H.A.-FOR HIGH ALARM LEVEL
 L.A.-FOR LOW ALARM LEVEL

† STAMP 350 WSP- FOR STEAM SERVICE
 650 PSI AT 200° F (ONLY WHEN SPECIFIED)



HYDROSTATIC TEST - 975 PSI

* TOLERANCES DEFINED BY PES-004

MATERIAL: X	
DRAWN: SMH	CHECKED: X
SCALE: NONE	DATE: 8/25/95
REV. 16 PER CDC 95-127	

CLARK-RELIANCE CORP.
 STRONGSVILLE, OHIO, U.S.A.

PART NO.: SEE CHART

EA100D LEVALARM
 ASSEMBLY

TOLERANCE CLASS: X

DRAWING NUMBER:	REV.
B-15290	16

BILL OF MATERIAL

ITEM	PART #	QTY.	DESCRIPTION	MATERIAL	DWG. #
1	EA100S-2	1	BODY	CAST STEEL A216 GR. WCB	B-11878
2	EA100-23	1	SWITCH COVER	MONEL B127-58	B-8838
3	EA100-12	1	CONNECTOR ROD ASSEMBLY	STAINLESS STEEL 18-8	B-8838
4	EA100-13	1	MAGNET ASSEMBLY	ALNICO V NICKEL PLATED	B-8838
5	EA100-14X	1	SWITCH ASSEMBLY	-	B-8838
6	EA100R-27S	1	SWITCH HOUSING ASSEMBLY	CAST STEEL A216 GR. WCB	A-15770
7	EA100-21	1	LEVER PIN	STAINLESS STEEL 18-8	B-8838
8	EA100-17	1	NAME PLATE	ALUMINUM	B-25-59
9	X172910	1	RHMS 10-24 X 1/4	BRASS	-
10	CI-3	1	GASKET	STEEL	A-6534
11	X172372	6	CAP BOLT 1/2-13 X 2	STEEL A193 GR. B-7	-
12	F3S	1	FLOAT	STAINLESS STEEL A240 TP304	-
13	EA6-15	1	SWITCH INSULATOR	FIBRE	A-7577
14	X173260	2	METALLIC DRIVE SCREW U4 X 3/16	STEEL	-
15	X174280	2	SHAKEPROOF #6 LOCK WASHER	STEEL	-
16	X172860	2	R.H. SCREW & NUT 6-32 X 1	BRASS	-
17	X171700	2	COTTER PIN 1/32 X 1/2"	STAINLESS STEEL 18-8	-
18	X171501	6	HEAVY HEX NUT 1/2-13	STEEL A194 GR. 2H	-

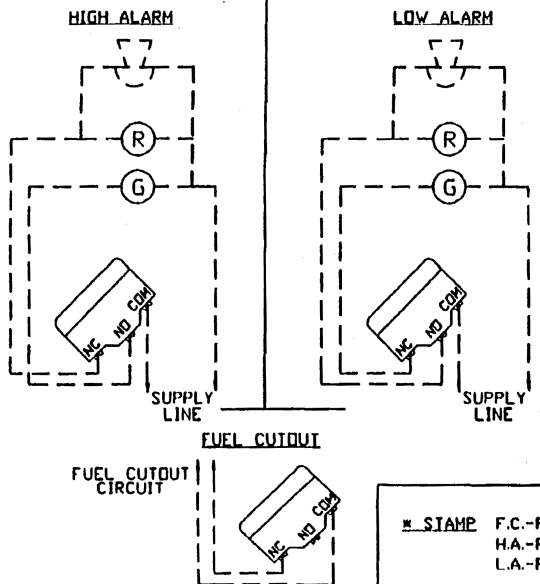
NOTES: MICRO SWITCH, TYPE BZ-2RW82444-A2
 UNDERWRITER APPROVED
 FOR THE FOLLOWING RATINGS:
 5A-125,250, OR 480 VAC
 1/2A-125 VDC
 1/4A-250 VDC

NORTHEAST CONTROLS INC
 P.O. BOX 275-123 PLEASANT AVE
 U. SADDLE RIVER, NJ 07458
 TEL (201) 327-7680
 FAX (201) 327-3242

HYDROSTATIC TEST - 1200 PSI

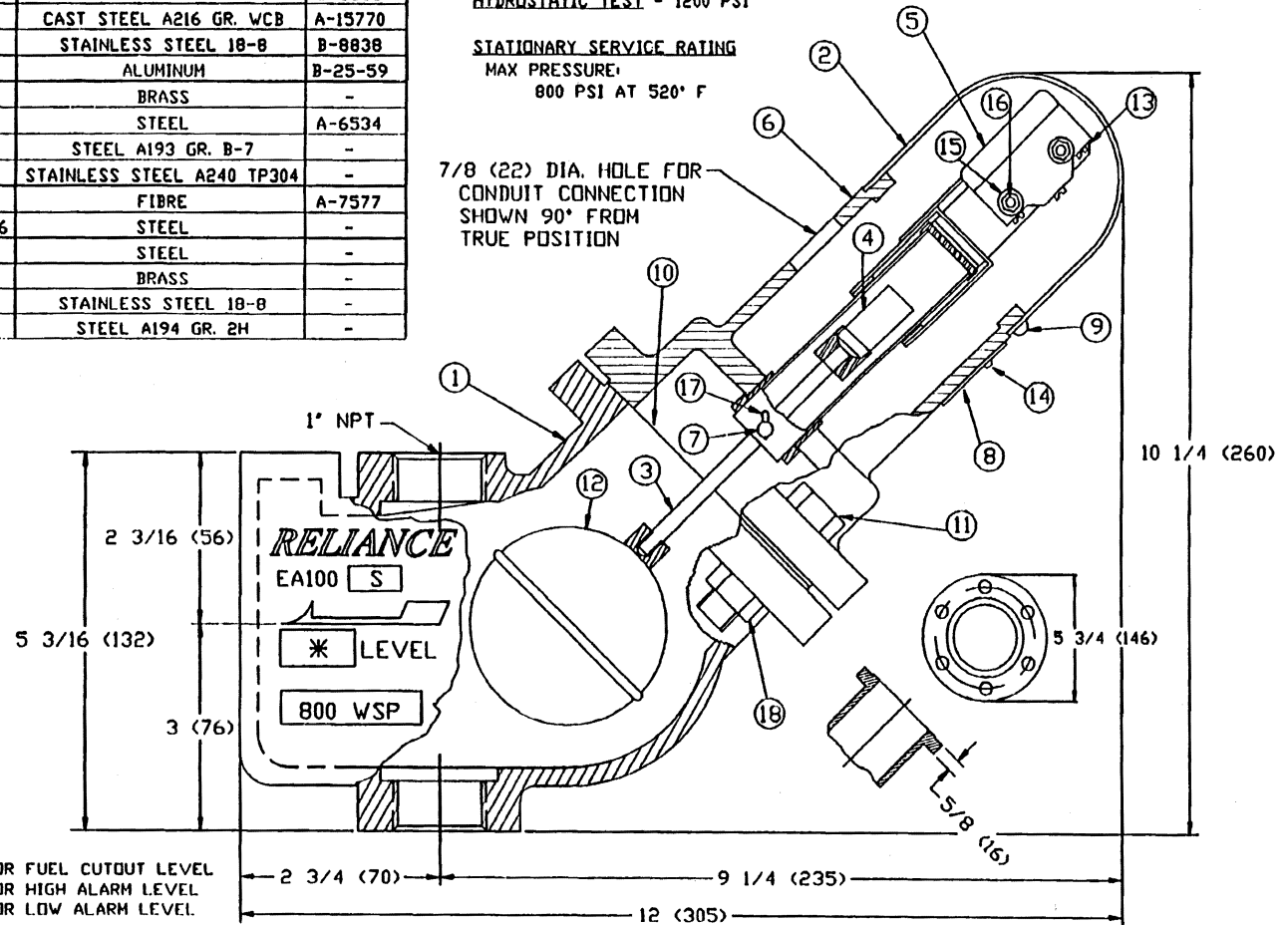
STATIONARY SERVICE RATING
 MAX PRESSURE:
 800 PSI AT 520° F

7/8 (22) DIA. HOLE FOR
 CONDUIT CONNECTION
 SHOWN 90° FROM
 TRUE POSITION



WIRING DIAGRAMS

* STAMP F.C.-FOR FUEL CUTOUT LEVEL
 H.A.-FOR HIGH ALARM LEVEL
 L.A.-FOR LOW ALARM LEVEL



* TOLERANCES DEFINED BY PES-004

MATERIAL: X	
DRAWN: SMH	CHECKED: X
SCALE: NONE	DATE: 8/31/95
REV. 7 PER CDC 95-127	

CLARK-RELIANCE CORP.
 PART NO.: SEE CHART

EA100S LEVALARM
 ASSEMBLY
 TOLERANCE CLASS: X

DRAWING
 NUMBER:
 B-9970
 REV.
 7

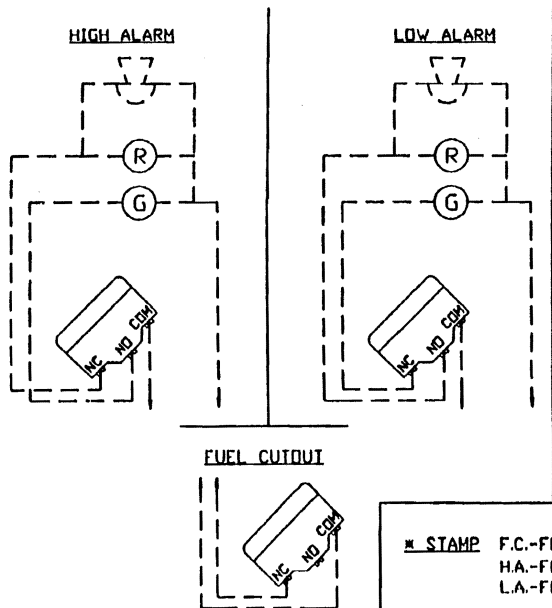
BILL OF MATERIAL

ITEM	PART #	QTY.	DESCRIPTION	MATERIAL	DWG. #
1	EA100S-2	1	BODY	CAST STEEL A216 GR. WCB	B-1187B
2	EA100EP-2	1	SWITCH COVER	CAST IRON	B-9573
3	EA100-12	1	CONNECTOR ROD ASSEMBLY	STAINLESS STEEL A276	B-883B
4	EA100-13	1	MAGNET ASSEMBLY	-	B-883B
5	EA100-14X	1	SWITCH ASSEMBLY	-	B-883B
6	EA100EPS-2	1	SWITCH HOUSING ASSEMBLY	CAST STEEL A216 GR. WCB	A-969B
7	EA100-21	1	LEVER PIN	STAINLESS STEEL A276	B-883B
8	EA100-17	1	NAME PLATE	ALUMINUM	B-25-59
9	X173260	2	#4 X 3/16 SHEET METAL SCREW	STEEL	-
10	X171700	2	COTTER PIN 1/32 X 1/2	STAINLESS STEEL 18-8	-
11	CI-3	1	GASKET	STEEL	-
12	X173720	6	STUD 1/2-13 X 3	STEEL A193 GR.7	-
13	F3S	1	FLOAT	STAINLESS STEEL A269	A-5665
14	EA6-15	1	SWITCH INSULATOR	FIBRE	A-7577
15	X174280	2	SHAKEPROOF #6 LOCK WASHER	-	-
16	X172860	2	R.H. SCREW & NUT 6-32 X 1	BRASS	-
17	X171501	12	HEAVY HEX NUT 1/2-13	STEEL	-

NOTES: MICRO SWITCH, TYPE BZ-2RW824-2A
 UNDERWRITER APPROVED
 FOR THE FOLLOWING RATINGS:
 15A-125,250, OR 480V AC
 1/2A-125V DC
 1/4A-250V DC

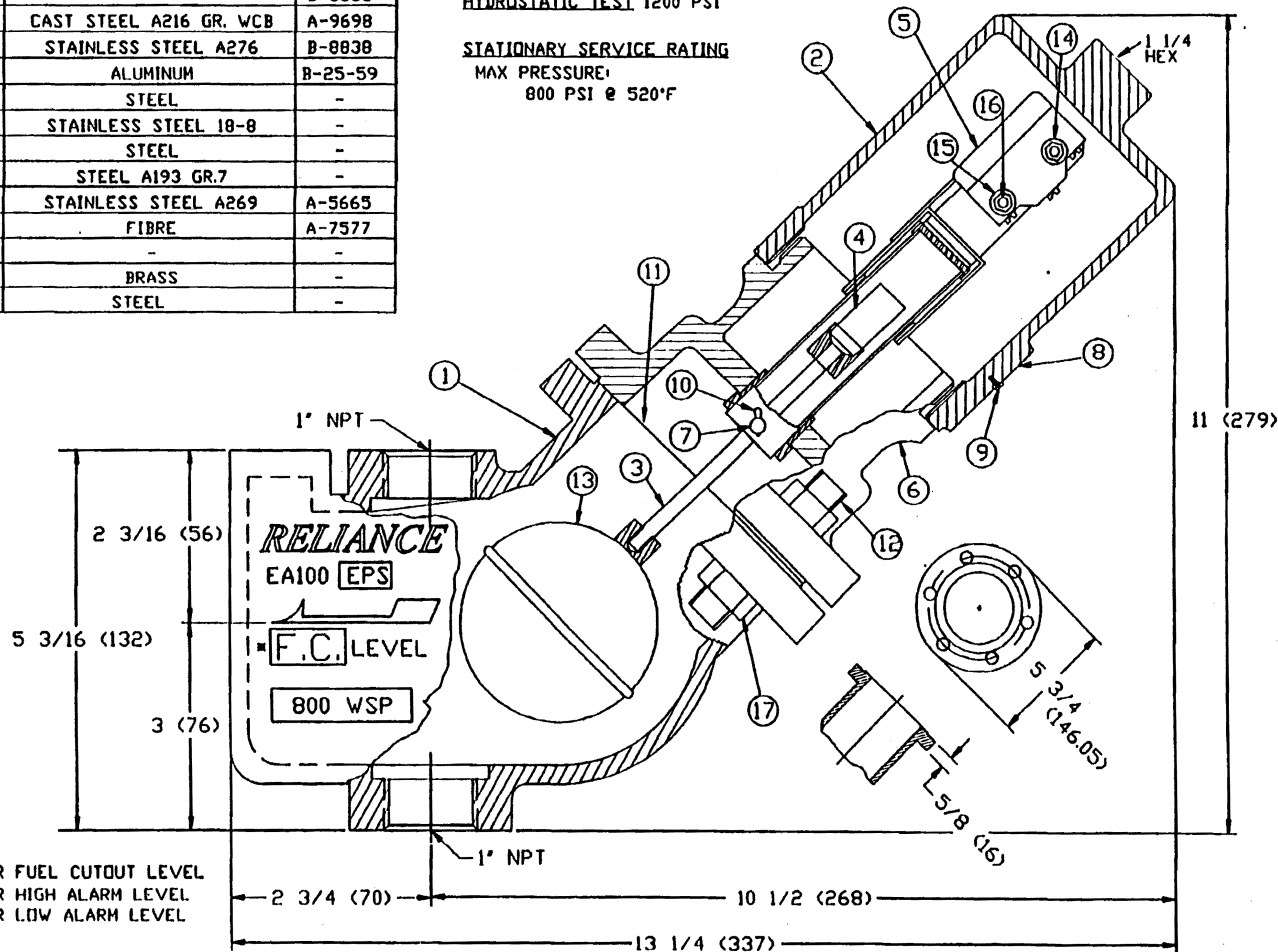
HYDROSTATIC TEST 1200 PSI

STATIONARY SERVICE RATING
 MAX PRESSURE:
 800 PSI @ 520°F



WIRING DIAGRAMS

* STAMP F.C.-FOR FUEL CUTOUT LEVEL
 H.A.-FOR HIGH ALARM LEVEL
 L.A.-FOR LOW ALARM LEVEL



* TOLERANCES DEFINED BY PES-004

MATERIAL: X
 DRAWN: SMH CHECKED: X
 SCALE: NONE DATE: 9/21/95
 REV. 6 PER CDC 95-127

CLARK-RELIANCE CORP.
 STRONGSVILLE, OHIO, U.S.A.

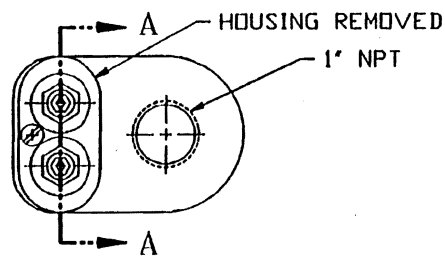
PART NO.: SEE CHART

EA100EPS LEVEL ALARM
 ASSEMBLY

TOLERANCE CLASS: X

DRAWING
 NUMBER:
 B-9574

REV.
 6

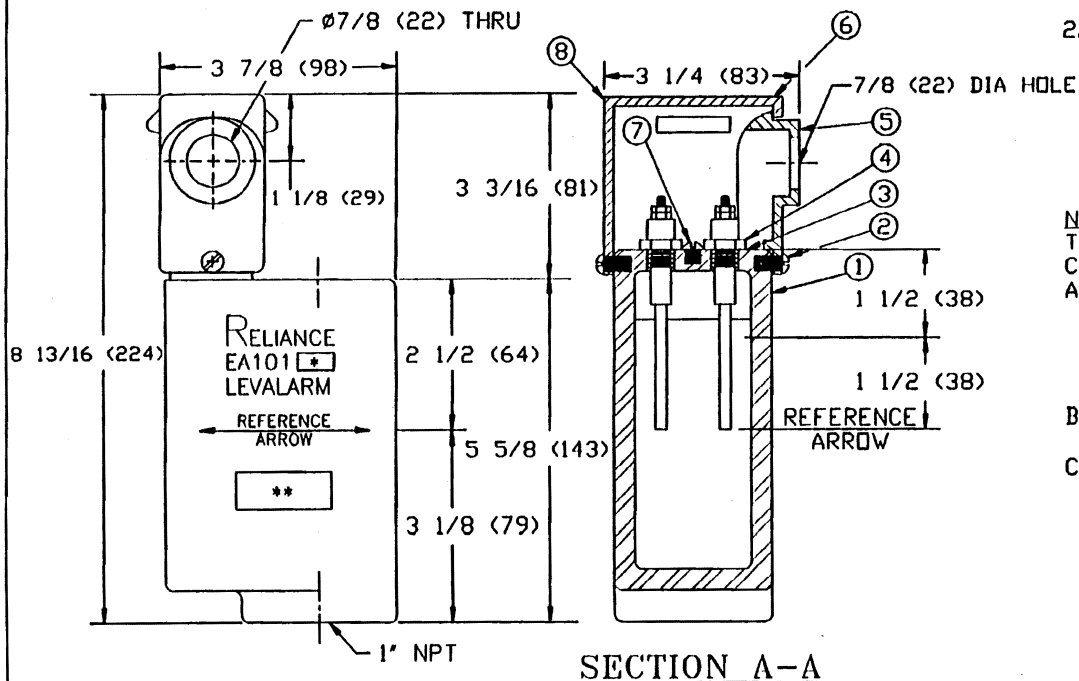


BILL OF MATERIAL					
ITEM	P/N	QTY	DESCRIPTION	MAT'L	DWG NO
1	EA101S 1	1	BODY	CAST STEEL	A-13879
2	X172993	2	RD HD MACH SCREW 12-24X3/8	STEEL	
3		2	ELECTRODE FITTING GASKET		
4		2	ELECTRODE FITTING		
5	EA15R 22	1	CONDUIT BRACKET	ALUMINUM	B-8697
6	EA100 18	1	ELECTRODE FITTING HOUSING	ALUMINUM	B-8697
7	X172990	1	COMMON CONN. SCREW, 12-24X1/4	STEEL	
8	X174610	1	LEVALARM NAME PLATE	ALUMINUM	A-7863

NOTE:

ITEMS 3 AND 4, PROBES AND GASKETS:

1. FOR STEAM SERVICE FORM 451 TO 1000 WSP FURNISH EA15-5V ELECTRODE FITTING AND X175500 GASKET
2. FOR STEAM SERVICE FORM 1001 TO 1800 WSP FURNISH EA15-5Z ELECTRODE FITTING AND E10-10S GASKET



NOTE ON APPLICATION:

THIS EA101 LEVALARM CAN BE USED FOR THE FOLLOWING CONTROL AND ALARM FUNCTIONS:

- A. WITH ONE PROBE AND ONE RELAY, EITHER:
 1. HIGH ALARM
 2. LOW ALARM
 3. FUEL CUTOFF
 4. LOW ALARM AND FUEL CUTOFF (SAME LEVEL)
- B. WITH TWO PROBES AND ONE RELAY
 1. PUMP CONTROL (FOR LEVEL DIFFERENTIALS UP TO 3')
- C. WITH TWO PROBES AND TWO RELAYS, EITHER:
 1. DUAL FUEL CUTOFF
 2. LOW ALARM AND FUEL CUTOFF (DIFFERENT LEVELS)

NOTE ON LETTERING:

- * STAMP 'S' ON CAST STEEL BODY (EA101S LEVALARM)
- ** PRESSURE BLOCK TO BE STAMPED:
- 1800 PSI (FOR TANK SERVICE, USING EA15-5T ELECTRODES)
- 450 WSP (FOR STEAM SERVICE, USING EA15-5V ELECTRODES)
- 1000 WSP (FOR STEAM SERVICE, USING EA15-5V ELECTRODES)
- 1800 WSP (FOR STEAM SERVICE, USING EA15-5Z ELECTRODES)

LOCATE PROBE LEVELS WITH RESPECT TO REFERENCE ARROW

HYDROTEST: 4500 PSI

MATERIAL: SEE TABLE

DRAWN: BSL CHECKED:

SCALE: NONE DATE: 9/29/95

REV. 6 PER CDC 95-127/BSL

CLARK-RELIANCE CORP.
STRONGVILLE, OHIO, U.S.A.

PART NO.: EA101S

EA101S LEVALARM
ASSEMBLY

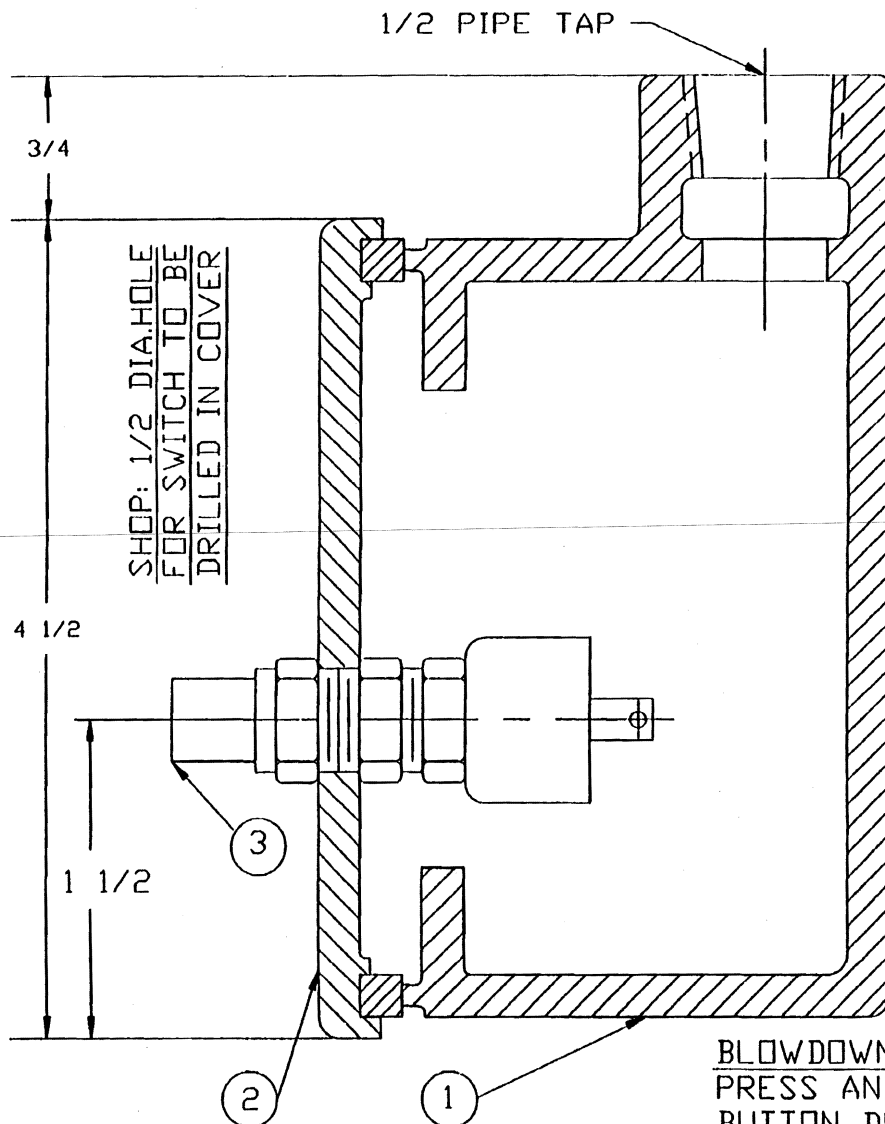
TOLERANCE CLASS: N/A

DRAWING
NUMBER:

B-9567

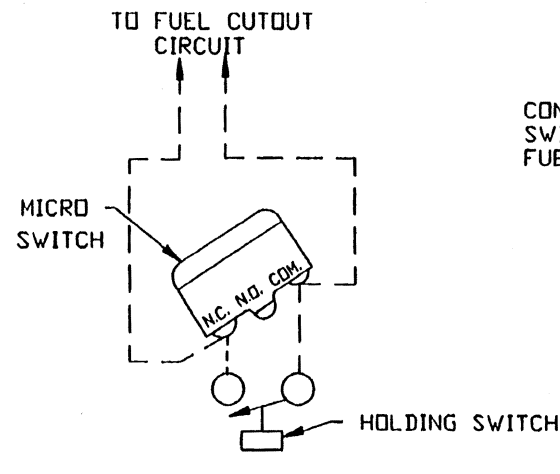
REV.

6



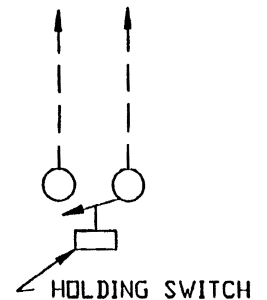
- ① CONDULET BOX
PART NO: HS-1
- ② COVER & GASKET
PART NO: HS-2
- ③ SWITCH
PART NO : HS-3
- ④ NAME PLATE
PART NO: FG40-8

FOR FLOAT TYPE LEVALARMS
(EA100 & EA102 SERIES)



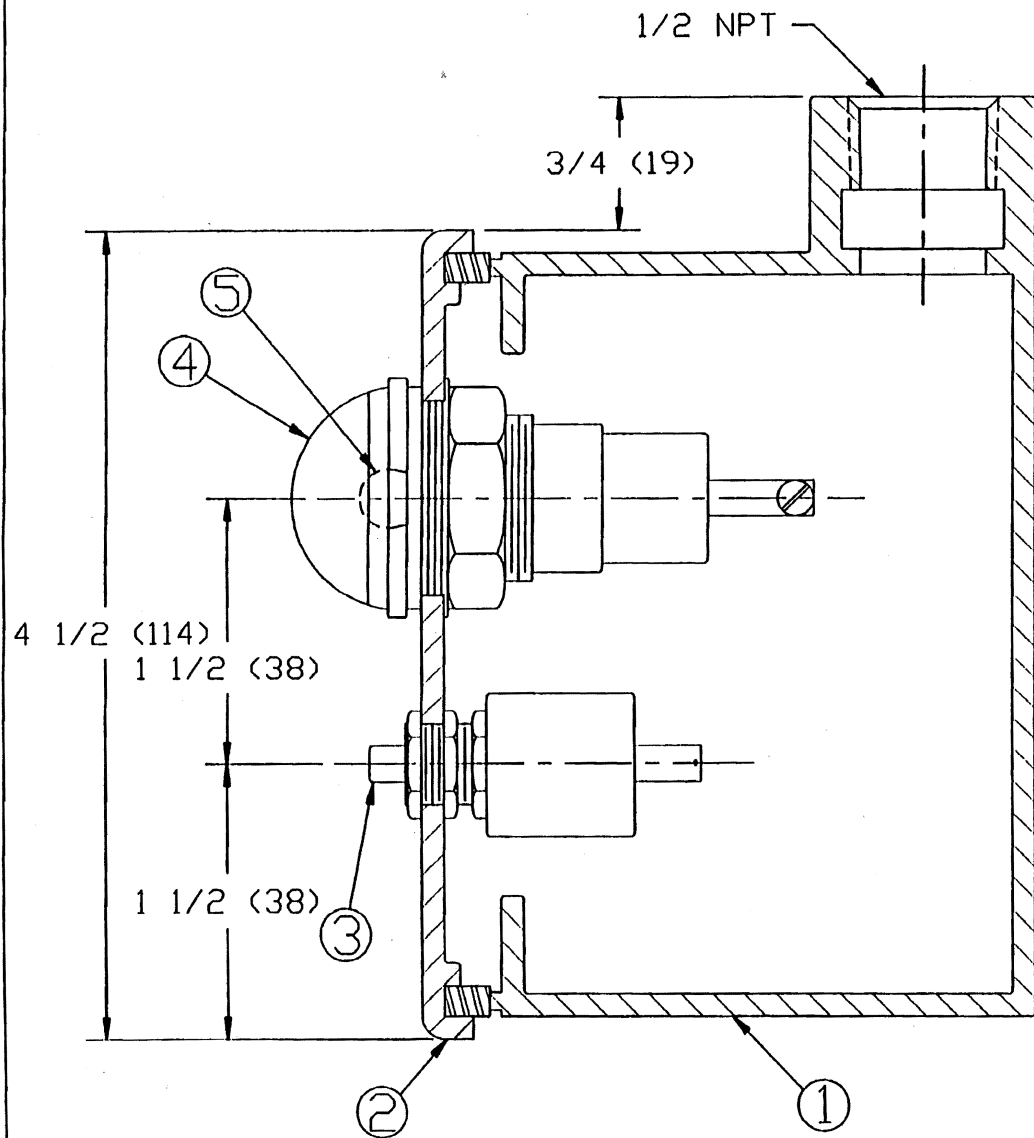
FOR ELECTRODE TYPE
LEVALARMS

CONNECT TO FUEL CUTOFF
SWITCH TERMINALS OF
FUEL CUTOFF RELAY



BLOWDOWN INSTRUCTIONS:
PRESS AND HOLD THE SWITCH
BUTTON DURING BLOWDOWN IN ORDER
NOT TO INTERRUPT FUEL CUTOFF DEVICE

				UNLESS OTHERWISE NOTED:		THE CLARK-RELIANCE CORP.		MATERIAL	
				TOLERANCES (1)		STRONGSVILLE, OHIO		DRAWN LS SCALE NONE	
				DECIMAL & STOCK (.002)				CHKD. DATE 9-23-92	
				FIN. FRACTIONAL (UP TO 1", NOT INCL.) (.010)				DRAWING NO. REV.	
				FIN. FRACTIONAL (1" INCL., UP TO 3") 1/64				A-10667 3	
				FIN. FRACTIONAL (3" INCL., UP TO 6") 1/32					
				FIN. FRACTIONAL (6" INCL., UP TO 12") 1/16					
				FIN. FRACTIONAL (12" & OVER) 1/8					
				ANGLES 11					
				MACHINE FINISH- 125√ OR SMOOTHER					
				REMOVE BURRS AND SHARP EDGES					
3	REDRAWN	9-23-92	LS	HS-0 HOLDING SWITCH FOR FUEL CUTOFF DEVICES					
REV	DESCRIPTION	DATE	SIG						
REVISIONS									



- ① CONDULET BOX
PART NO: HS-1
- ② COVER & GASKET
PART NO: HS-2
- ③ SWITCH
PART NO: HS-3
- ④ PILOT LIGHT - RED
PART NO: LI2-3
- ⑤ LAMP, 115V - 6W
PART NO: LI2-5
- ⑥ NAMEPLATE
PART NO: FG40-8

MATERIAL: N/A		CLARK-RELIANCE CORP. STRONGSVILLE, OHIO, U.S.A.	HS1 HOLDING SWITCH WITH LIGHT INDICATOR FOR FUEL CUTOFF DEVICES	DRAWING NUMBER: A-9427	REV. 3
DRAWN: BAC	CHECKED:				
SCALE: NONE	DATE: 1/15/96				
REV. 3 PER CDC 95-127/BSL		PART NO.: SEE NOTE	TOLERANCE CLASS: X		