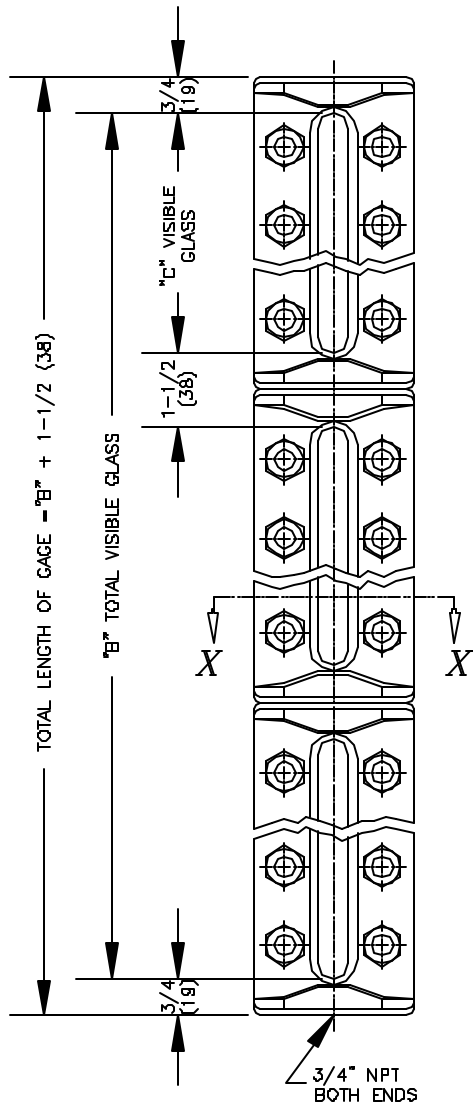
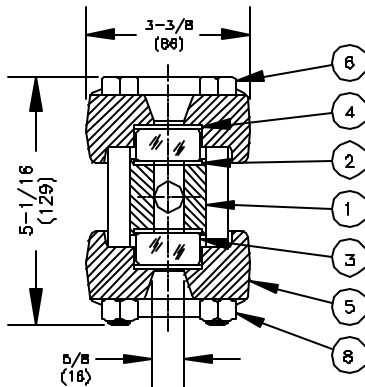
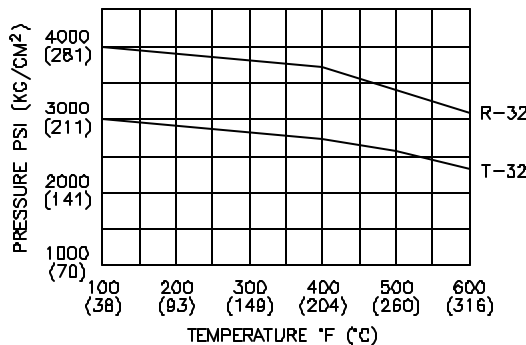


NOTES:

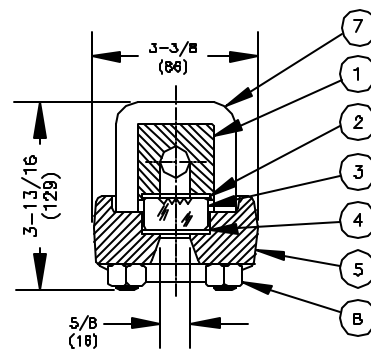
- FOR 3/4" NPT END CONN. SEE DWG NO 32-60
- DIMENSIONS IN INCHES WITH mm EQUIVALENTS IN PARENTHESES.



BILL OF MATERIAL						
PIECE NO.	NAME OF PART	QTY.	MATERIAL	PART NO.	REMARKS	
1	CHAMBER	1	STEEL	L-1653- -A44	ASTM A696	
	TRANS REFLEX	1		L-1656- -A44	ASTM A696	
2	GASKET		IFG5500	V-18980-		
3	GLASS		TEMPERED GLASS	V-16756-		
	TRANS REFLEX			V-16757-		
4	CUSHION		IFG5500	V-18980-		
5	COVER		STEEL	V-2- -A4	AISI C1040	
6	BOLT		ALLOY STL	P-263-B71	ASTM A193	
7	U-BOLT		ALLOY STL	P-256-B71	ASTM A193	
8	NUT		STEEL	V-11062-2HA	ASTM A194	
9	RATING TAG	1	SS	V-17538		
	RATING TAG	1	SS	V-17539		



SECTION X-X
SERIES T-32



SECTION X-X
SERIES R-32

SIZE NO.	QTY. PER SECT	DIM. "C" IN INCHES	NUMBER OF SECTIONS								
			DIMENSION "B" IN INCHES								
			1	2	3	4	5	6	7	8	9
1	6	3 3/4 (95)	3 3/4 (95)	9 (229)	14 1/4 (362)	19 1/2 (495)	24 3/4 (629)	30 (762)	35 1/4 (895)	40 1/2 (1029)	45 3/4 (1162)
2	6	4 3/4 (121)	4 3/4 (121)	11 (279)	17 1/4 (438)	23 1/2 (597)	29 3/4 (756)	36 (914)	42 1/4 (1073)	48 1/2 (1232)	54 3/4 (1391)
3	8	5 3/4 (146)	5 3/4 (146)	13 (330)	20 1/4 (514)	27 1/2 (699)	34 3/4 (883)	42 (1067)	49 1/4 (1251)	56 1/2 (1435)	63 3/4 (1619)
4	10	6 3/4 (171)	6 3/4 (171)	15 (381)	23 1/4 (591)	31 1/2 (780)	39 3/4 (1010)	48 (1219)	56 1/4 (1429)	64 1/2 (1638)	72 3/4 (1848)
5	10	7 7/8 (200)	7 7/8 (200)	17 1/4 (438)	26 5/8 (676)	36 (914)	45 3/8 (1153)	54 3/4 (1391)	64 1/8 (1629)	73 1/2 (1867)	82 7/8 (2105)
6	12	9 1/8 (232)	9 1/8 (232)	19 3/4 (502)	30 3/8 (772)	41 (1041)	51 5/8 (1311)	62 1/4 (1581)	72 7/8 (1851)	83 1/2 (2121)	94 1/8 (2391)
7	14	10 1/4 (260)	10 1/4 (260)	22 (559)	33 3/4 (857)	45 1/2 (1156)	57 1/4 (1454)	69 (1753)	80 3/4 (2051)	92 1/2 (2350)	104 1/4 (2648)
8	16	11 7/8 (302)	11 7/8 (302)	25 1/4 (641)	38 5/8 (981)	52 (1321)	65 3/8 (1661)	78 3/4 (2000)	92 1/8 (2340)	105 1/2 (2680)	118 7/8 (3019)
9	16	12 5/8 (321)	12 5/8 (321)	26 3/4 (679)	40 7/8 (1038)	55 (1397)	69 1/8 (1756)	83 1/4 (2115)	97 3/8 (2473)	111 1/2 (2832)	125 5/8 (3191)

4	ADDED SHROUDED COVERS	10/15/98	
3	REDRAWN & ADDED METRICS	6/11/96	
2	REDRAWN & UPDATED, IFG5500	1/18/96	
1	REDRAWN & UPDATED	6/29/92	
SYM	REVISION	DATE	APP

SERIES 32 GAGES
3/4" NPT END CONN.

JERGUSON
GAGE & VALVE CO.
STRONGVILLE, OHIO, U.S.A.

DRAWN TAP	FILE NO.
CHECKED MJK	DRAWING NO.
APPROVED	32-60
SCALE NONE	DATE 10/15/98
	REV. 4