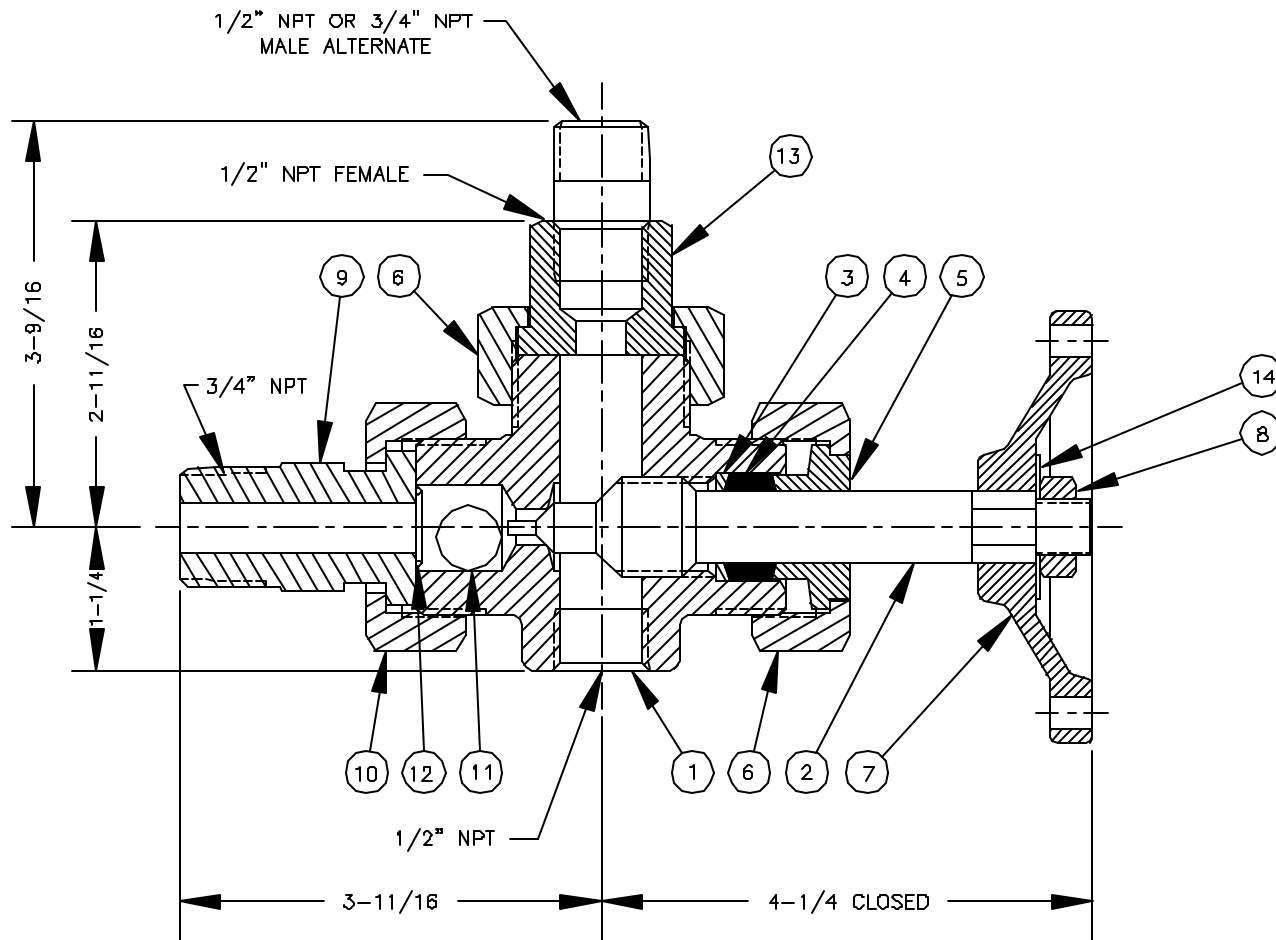


BILL OF MATERIAL								
			144-1-01-A			144-1-01-T		
PIECE NO.	NAME OF PART	QTY.	MATERIAL	PART NO.	REMARKS	MATERIAL	PART NO.	REMARKS
1	VALVE BODY & SEAT	1	STEEL	V-11067-A5	ASTM A108	316L SS	V-11067-TL1	ASTM A182
2	STEM	1	416 SS	V-11955-U3	QQ-S-763	316 SS	V-11955-TL2	QQ-S-763
3	PACKING RING	1	STEEL	P-254-1-A6	ASTM A108	316 SS	P-254-1-T2	QQ-S-763
4	PACKING	3	GPH/NICR	G-259		GPH/NICR	G-259	
5	GLAND	1	STEEL	V-10167-A6	ASTM A108	STEEL	V-10167-A6	ASTM A108
6	NUT-GLAND, TAILPIECE	2	STEEL	P-70-6-A6	ASTM A108	STEEL	P-70-6-A6	ASTM A108
7	HANDWHEEL	1	MAL. IRON	PD-325-D1		MAL. IRON	PD-325-D1	
8	NUT-STEM	1	STEEL	P-78-6-A12	ASTM A563	STEEL	P-78-6-A12	ASTM A563
9	TAILPIECE, 3/4" MALE ADJ	1	STEEL	V-12009-A6	ASTM A108	316 SS	V-12009-T2	ASTM A276
10	NUT-TAILPIECE	1	STEEL	P-70-4B-A6	ASTM A108	STEEL	P-70-4B-A6	ASTM A108
11	BALL CHECK	1	440 SS	P-1-I		316 SS	P-1-T2	
12	BALL CHECK STOP	1	316 SS	V-13113-T		316 SS	V-13113-T	
13	TAILPIECE, 1/2" FEMALE	1	STEEL	P-198-A6	ASTM A108	316 SS	P-198-T2	ASTM A276
	TAILPIECE, 1/2" MALE			P-400-A6			P-400-T2	
	TAILPIECE, 3/4" MALE			P-120-A6			P-120-T2	
14	RATING TAG	1	SS	V-8981-144		SS	V-18716-144	

NOTES.

1. VALVES HAVE INTEGRAL SEAT.
2. VALVE RATING - CARBON STEEL & 316 SS  
2400 PSI @ 100°F, 1400 PSI @ 750°F
3. TAILPIECE CENTERLINE MAY BE POSITIONED A MAXIMUM OF 5/64" OFF THE VALVE CENTERLINE.



12	REDRAWN & UPDATED	7/7/98	
11	REDRAWN & UPDATED	7/15/96	
10	REDRAWN & UPDATED	3/15/96	
9	REDRAWN & UPDATED	8/4/92	
SYM	REVISION	DATE	APP

#144 VALVE P/C  
UNION TANK CONN.

**JERGUSON**  
**GAGE & VALVE CO.**  
STRONGSVILLE, OHIO, U.S.A.

DRAWN	FILE NO.
TAP	DRAWING NO.
CHECKED	144-1-01
MJK	
APPROVED	REV. 12

SCALE NONE DATE 7/7/98