

MATERIAL: SEE B/M  
 DRAWN: TFK  
 CHECKED: DEP  
 SCALE: NONE  
 DATE: 9-15-95

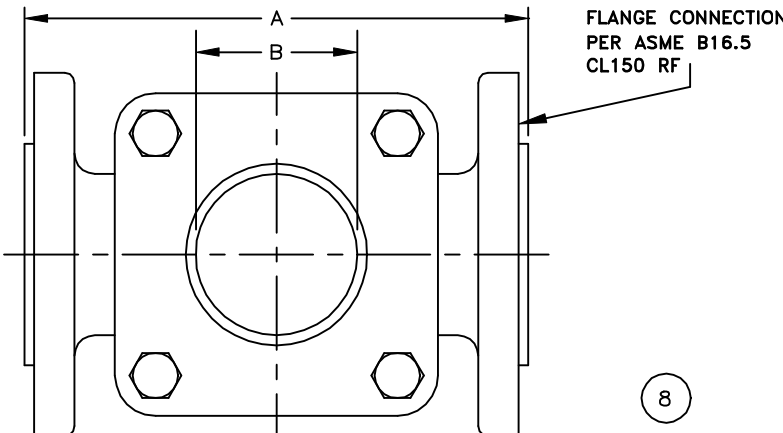


SIGHT FLOW INDICATOR  
 TEFZEL LINED  
 STYLES 910-FA-TFZ AND 608-FA-TFZ

Section: T400  
 Bulletin: T400.10Z  
 Date: 11/10/98  
 Supersedes: 06/01/97

150 ASME CLASS MODELS

FILE NO.: T400-10Z.DWG



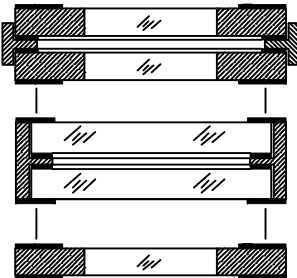
PARTS LIST				
PIECE NO.	NAME OF PART	QUAN.	MATERIAL	COMMENTS
1	BODY	1	SEE BELOW	
2	RETAINER	2	STEEL	
3	CUSHION	2	FIBER	
4	SEAL GASKET	2		
5	WINDOW	2	BOROSILICATE	
6	BOLT		STEEL	
7	NUT		STEEL	
8	INDICATOR	1		

THIS DRAWING AND ALL INFORMATION ON IT IS THE PROPERTY OF JACOBY-TARBOX, DIVISION OF THE CLARK-RELIANCE CORPORATION. IT IS CONFIDENTIAL AND IS GIVEN TO YOU FOR A LIMITED PURPOSE AND MUST BE RETURNED UPON REQUEST. NEITHER THIS DRAWING NOR ANY PART OF IT NOR ANY INFORMATION CONCERNING IT MAY BE COPIED, EXHIBITED OR FURNISHED TO OTHERS NOR MAY PHOTOGRAPHS BE TAKEN OF ANY ARTICLE FABRICATED OR ASSEMBLED FROM THIS DRAWING WITHOUT CONSENT OF THE CLARK-RELIANCE CORPORATION.

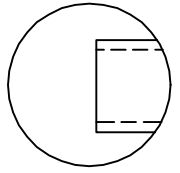
STYLE 910-FA(NF)-PFA

INDICATOR OPTIONS

- OPTIONS
- DUAL UNIGLAS WINDOWS
  - FULL VIEW DUAL WINDOWS
  - UNIGLAS WINDOW

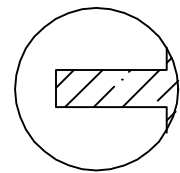


Factory Mutual System Approved



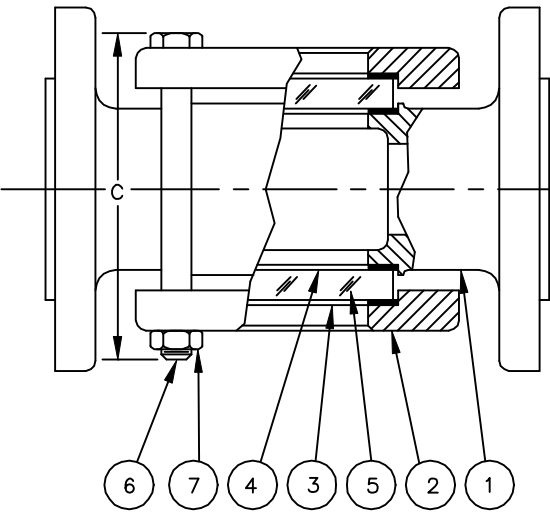
DRIP TUBE

STYLE 608-FA-TFZ



PTFE FLUTTER

STYLE 910-FA-FLTR-TFZ



ASME CLASS P/T RATINGS

TEMP F	150 CLASS	
	STEEL	316 SS
-20 TO 100	285	275
150	270	260
200	260	240
250	245	230
300	230	215
350	215	205
400	200	195
450	185	180
500	170	170

STANDARD DESIGN MATERIALS:

- BODY: ASTM A-216 WCB (CARBON STEEL)
- ASTM A-351 CF8M (316 SS)
- LINING: 70-95 MILS TEFZEL
- RETAINER: ASTM A-216-WCB (STEEL) (1/2"-6")
- ASTM A-516 GR. 70 (STEEL) (8" & UP)
- FASTENERS: A354-BD/A194-2H (STEEL)
- INDICATOR: PTFE FLUTTER & DRIP
- 304/316 SS TRIM AVAILABLE
- BODIES ARE RATED FOR FULL VACUUM SERVICE

ADD 1/8" TO "A" DIMENSION IF DRIP TUBE INDICATOR IS SELECTED

PIPE SIZE	DIMENSIONS						APPROX. WGT.		# BOLTS
	A		B		C		LBS.	KGS.	
	IN.	MM	IN.	MM	IN.	MM			
1/2&3/4	4-5/8	118	1-1/4	32	4	102	6	2.7	4
1	5-5/8	143	1-1/4	32	4-1/2	114	8	3.6	4
1-1/2	6-1/2	165	2	51	5-3/4	146	15	6.8	4
2	7-7/8	200	2	51	6	152	22	10	4
2-1/2&3	9-3/8	238	3-3/16	81	8	203	44	20	4
4	11	279	4-3/8	111	10-1/4	260	67	30.4	4
6	14-1/4	362	6	153	13-1/2	343	120	54.4	4
8	16-1/8	410	8-1/4	210	16-1/2	419	230	104.3	4
10	24-3/4	629	11	279	23-11/16	602	405	183.7	16
12	25-3/4	654	11	279	23-11/16	602	460	208.7	16
14	26-3/4	679	11	279	27	686	505	229	16
16	26-3/4	679	11	279	27	686	555	251.7	16