

MATERIAL: SEE B/M
 DRAWN: TFK
 SCALE: NONE
 CHECKED: DEP
 DATE: 9-15-95

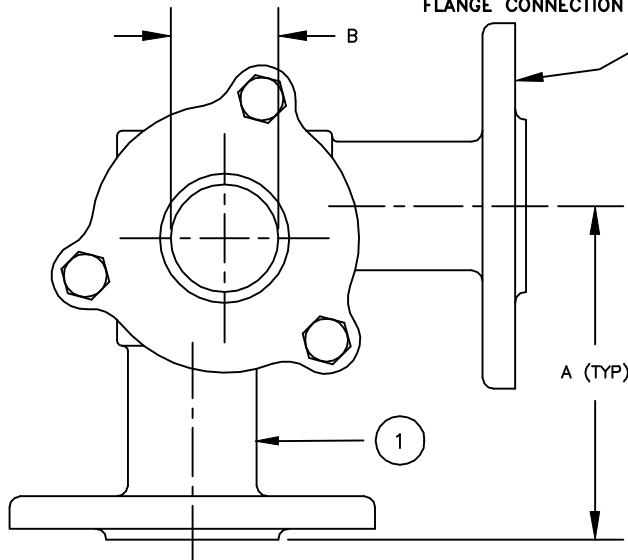


SIGHT FLOW INDICATOR
 STYLE 90 SERIES

Section: T400
 Bulletin: T400.07
 Date: 12/01/00
 Supersedes: 11/10/98

150 PSIG MODELS

FILE NO.: T400-07.DWG



FLANGE CONNECTION PER ASME B16.5 CL150 RF

PARTS LIST

PIECE NO.	NAME OF PART	QUAN.	MATERIAL	COMMENTS
1	BODY	1	SEE BELOW	
2	RETAINER	2	STEEL	
3	CUSHION	2	FIBER	
4	SEAL GASKET	2		
5	WINDOW	2	BOROSILICATE	
6	BOLT	3	STEEL	
7	NUT	3	STEEL	
8	INDICATOR			

TEMP F	150 PSIG MODELS		
	CS/316	BRONZE	IRON
-20 TO 100	150	150	150
150	150	150	150
200	150	150	150
250	150	150	150
300	150	150	150
350	150	150	150
400	150	150	140
450	150	N/R	N/R
500	150	N/R	N/R

THIS DRAWING AND ALL INFORMATION ON IT IS THE PROPERTY OF JACOBY-TARBOX, DIVISION OF THE CLARK-RELiance CORPORATION. IT IS CONFIDENTIAL AND IS GIVEN TO YOU FOR A LIMITED PURPOSE AND MUST BE RETURNED UPON REQUEST. NEITHER THIS DRAWING NOR ANY PART OF IT NOR ANY INFORMATION CONCERNING IT MAY BE COPIED, EXHIBITED OR FURNISHED TO OTHERS NOR MAY PHOTOGRAPHS BE TAKEN OF ANY ARTICLE FABRICATED OR ASSEMBLED FROM THIS DRAWING WITHOUT CONSENT OF THE CLARK-RELiance CORPORATION.

STANDARD DESIGN MATERIALS:

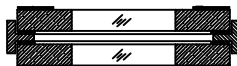
- BODY: ASTM A-216 WCB (CARBON STEEL)
- ASTM A-351 CF8M (316 SS)
- ASTM B-62 (BRONZE)
- ASTM A-126 CLASS B (CAST IRON)

- INDICATOR: 316 SS DRIP, PTFE FLUTTER
- RETAINER: ASTM A516 GR. 70 (STEEL)
- FASTENERS: SAE GRADE 5 (STEEL)

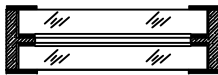
OPTIONAL ALLOYS FURNISHED UPON REQUEST
 304/316 SS TRIM AVAILABLE

OPTIONS

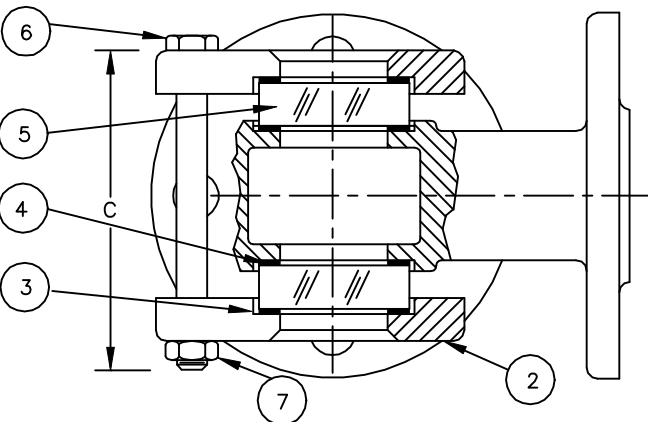
DUAL UNIGLAS WINDOWS



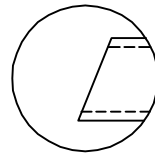
FULL VIEW DUAL WINDOWS



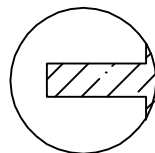
UNIGLAS WINDOW



INDICATOR OPTIONS



DRIP TUBE
 STYLE 90-D



PTFE FLUTTER
 STYLE 90-FLTR

8" UNIT CONSTRUCTED WITH ROUND STYLE RETAINER
 CAST IRON & BRONZE FLANGES ARE 125/150#F.F. PER ANSI B16.1 AND B16.24
 REDUCE "A" DIMENSION 1/16.

PIPE SIZE	DIMENSIONS						APPROX. WGT.	
	A		B		C		LBS.	KGS.
	IN.	mm	IN.	mm	IN.	mm		
1	3.94	100	1.25	32	3.50	89	8	3.6
1-1/2	4.50	114	2.00	51	5.00	127	15	6.8
2	5.06	129	2.50	64	6.00	152	22	10
2-1/2	6.00	152	3.19	81	7.00	178	44	20
3	6.00	152	3.19	81	7.00	178	44	20
4	6.75	171	4.25	108	9.00	229	120	54.4
6	8.44	214	6.87	175	11.50	292	230	104.3
8	12.13	308	8.25	210	18.00	457	275	124.6