

MATERIAL: SEE B/M
 DRAWN: TFK
 SCALE: NONE
 CHECKED: DEP
 DATE: 09/15/95

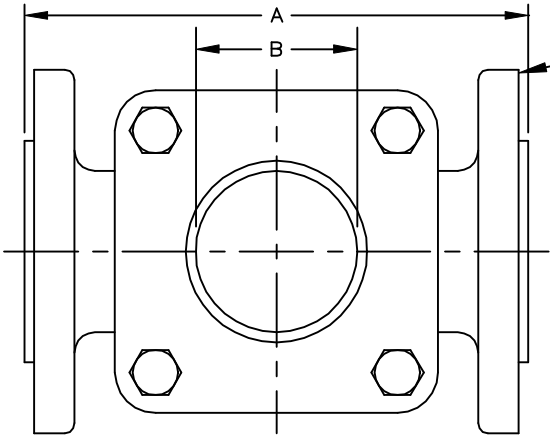


SIGHT FLOW INDICATOR
 STYLES 910-FA, 608-FA, & 935-FA

Section: T400
 Bulletin: T400.2
 Date: 12/01/00
 Supersedes: 11/10/98

150 ASME CLASS MODELS

FILE NO.: T400-02.DWG

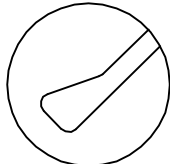


FLANGE CONNECTION PER ASME B16.5 CL150 RF



THIS DRAWING AND ALL INFORMATION ON IT IS THE PROPERTY OF JACOBY-TARBOX, DIVISION OF THE CLARK-RELIANCE CORPORATION. IT IS CONFIDENTIAL AND IS GIVEN TO YOU FOR A LIMITED PURPOSE AND MUST BE RETURNED UPON REQUEST. NEITHER THIS DRAWING NOR ANY PART OF IT NOR ANY INFORMATION CONCERNING IT MAY BE COPIED, EXHIBITED OR FURNISHED TO OTHERS NOR MAY PHOTOGRAPHS BE TAKEN OF ANY ARTICLE FABRICATED OR ASSEMBLED FROM THIS DRAWING WITHOUT CONSENT OF THE CLARK-RELIANCE CORPORATION.

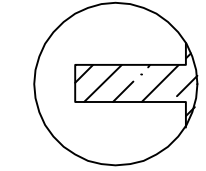
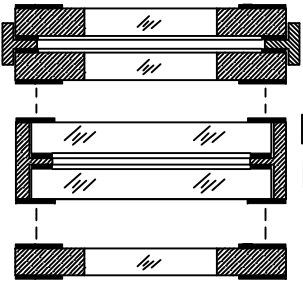
8
 INDICATOR OPTIONS



FLAPPER
 STYLE 910-FA

PARTS LIST				
PIECE NO.	NAME OF PART	QUAN.	MATERIAL	COMMENTS
1	BODY	1	SEE BELOW	
2	RETAINER	2	STEEL	
3	CUSHION	2	FIBER	
4	SEAL GASKET	2		
5	WINDOW	2	BOROSILICATE	
6	BOLT		STEEL	
7	NUT		STEEL	
8	INDICATOR	1		

- OPTIONS
- DUAL UNIGLAS WINDOWS
 - FULL VIEW DUAL WINDOWS
 - UNIGLAS WINDOW



PTFE FLUTTER
 STYLE 910-FA-FLTR

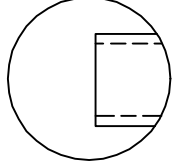
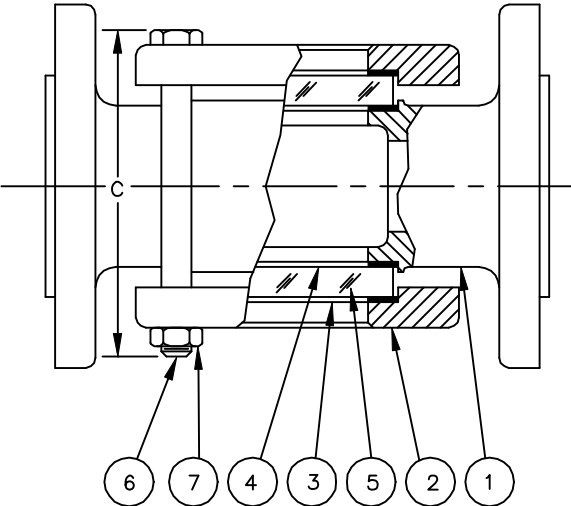
TEMP F	150 CLASS			
	STEEL	316 SS	BRONZE	IRON
-20 TO 100	285	275	225	200
150	270	260	225	200
200	260	240	210	190
250	245	230	195	175
300	230	215	180	165
350	215	205	165	150
400	200	195	150	140
450	185	180	N/R	N/R
500	170	170	N/R	N/R

STANDARD DESIGN MATERIALS:

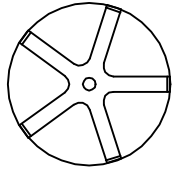
- BODY: ASTM A-216 WCB (CARBON STEEL)
- ASTM A-351 CF8M (316 SS)
- ASTM B-62 (BRONZE)
- ASTM A-126 CLASS B (CAST IRON)
- RETAINER: ASTM A-216-WCB (STEEL) (1/2"-6")
- ASTM A-516 GR. 70 (STEEL) (8" & UP)
- FASTENERS: A354-BD/A194-2H (STEEL)
- INDICATOR: 316 SS FLAP&DRIP , PTFE FLUTTER
- 304/316 TRIM AVAILALBE
- OPTIONAL ALLOYS FURNISHED UPON REQUEST

OPTIONAL PFA (TEFLON) LINING FOR FULL VACUUM SERVICE

CAST IRON & BRONZE FLANGES ARE 125/150#F.F. PER ANSI B16.1 AND B16.24
 REDUCE "A" DIMENSION 1/8. BRONZE & IRON AVAILABLE UP TO 8" SIZE



DRIP TUBE
 STYLE 608-FA



ROTARY
 STYLE 935-FA

DIMENSIONS

PIPE SIZE	A		B		C		APPROX. WGT.		# BOLTS
	IN.	mm	IN.	mm	IN.	mm	LBS.	KGS.	
1/2&3/4	4-5/8	118	1-1/8	28	4	102	6	2.7	4
1	5-5/8	143	1-1/4	32	4-1/2	114	8	3.6	4
1-1/2	6-1/2	165	2	51	5-3/4	146	15	6.8	4
2	7-7/8	200	2	51	6	152	22	10	4
2-1/2&3	9-3/8	238	3-3/16	81	8	203	44	20	4
4	11	279	4-3/8	111	10-1/4	260	67	30.4	4
6	14-1/4	362	6-7/8	175	13-1/2	343	120	54.4	4
8	16-1/8	410	8-1/4	210	16-1/2	419	230	104.3	4
10	24-3/4	630	11	279	23-11/16	602	405	183.7	16
12	25-3/4	654	11	279	23-11/16	602	460	208.7	16
14	26-3/4	679	11	279	27	686	505	229	16
16	26-3/4	679	11	279	27	686	555	251.7	16