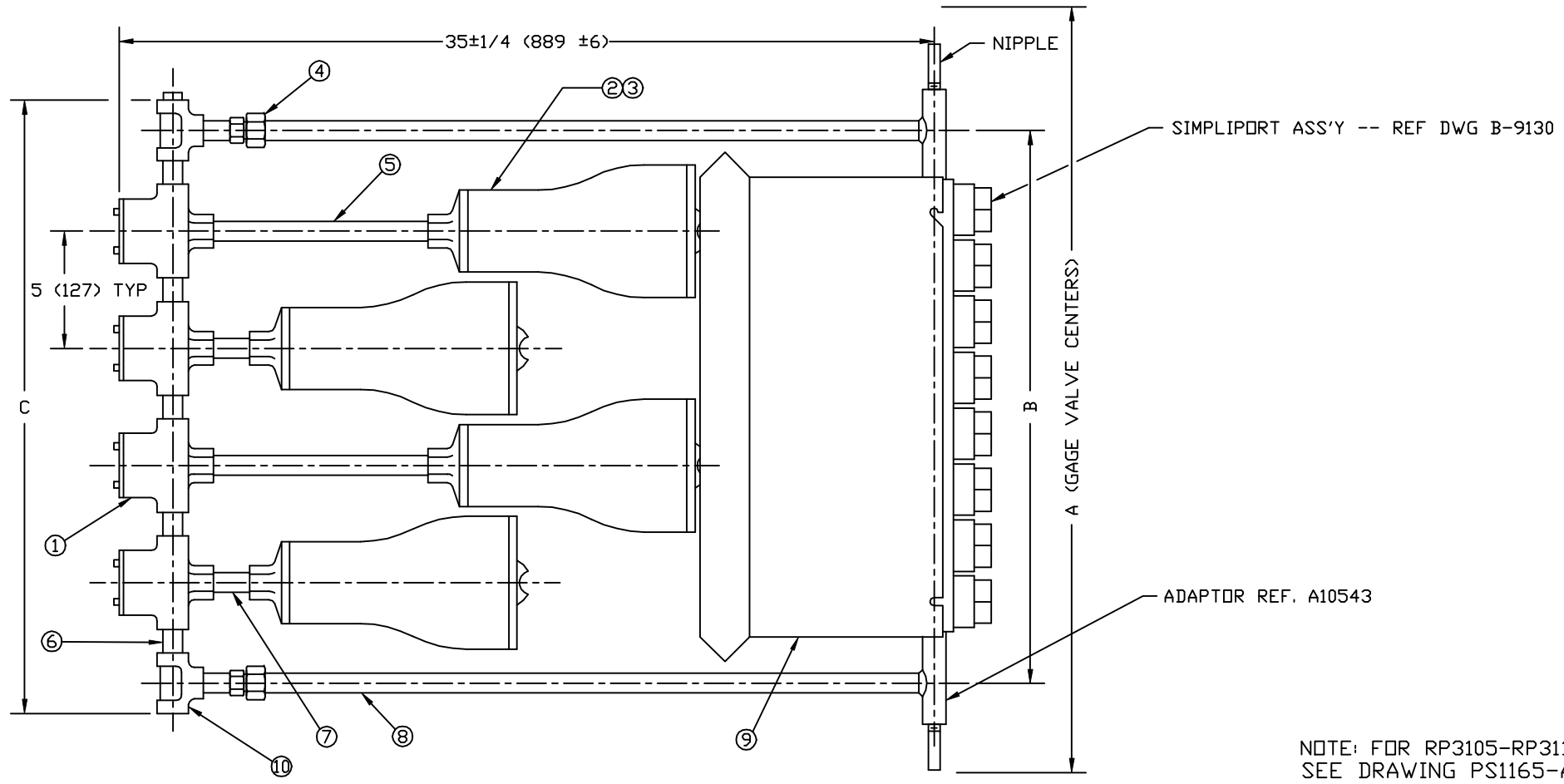


# BILL OF MATERIALS

SIMPLIPORT PART NO.	QUANTITY			DESCRIPTION	DWG NO
	RP3005	RP3007	RP3009		
1	3	4	5	EXPLOSION PROOF CONDULET	A-12846
2	3	4	5	LIGHTING FIXTURE	
3	3	4	5	FLOOD LAMP	
4	2	2	2	ERMETO FITTING	
5	2	2	2	1/2 NPT NIPPLE, 10" LONG	A-12848
6	4	5	6	1/2 NPT NIPPLE, 1 3/4" LONG	A-12848
7	1	2	2	1/2 NPT NIPPLE, 1 1/2" LONG	A-12848
8	2	2	2	3/4 OD X 3/8 ID TUBING, 31 1/8 LONG	A-12846
9	1	2	2	COLOR FILTER ASSEMBLY	B-10035
10	2	1	1	1/2 FORGED STEEL TEE, 2000#	

\* TO COMPLETE PART NO. ADD NUMBER OF WINDOW UNITS ON SIMPLIPORT FOR WHICH ILLUMINATOR IS REQUIRED

PART NO.	SIMPLIPORT PART NO.	A		B		C	
		MIN VALVE CENTERS WITH VALVE:		INCHES	mm	INCHES	mm
		RSG760, RSG778, RSG854, RSG858, RSG 860					
INCHES	mm	INCHES	mm	INCHES	mm		
RP3005 EPIL	RP3005	29 3/4	756	18 1/8	460	20 1/2	521
RP3006 EPIL	RP3006	29 3/4	756	18 1/8	460	20 1/2	521
RP3007 EPIL	RP3007	34 1/2	876	23 1/8	587	25 1/2	648
RP3008 EPIL	RP3008	34 1/2	876	23 1/8	587	25 1/2	648
RP3009 EPIL	RP3009	39 1/4	997	28 1/8	714	30 1/2	775
RP3010 EPIL	RP3010	39 1/4	997	28 1/8	714	30 1/2	775



NOTE: FOR RP3105-RP3110 SEE DRAWING PS1165-A

MATERIAL:	
DRAWN: BSL	CHECKED:
SCALE: NONE	DATE: 10/5/95
REV. 6 PER CDC 95-127/BSL	

**CLARK-RELIANCE CORP.**  
**STRONGVILLE, OHIO, U.S.A.**  
 PART NO.: SEE TABLE

EXPLOSION-PROOF  
 ILLUMINATOR  
 FOR SIMPLIPORT GAGES  
 TOLERANCE CLASS: N/A

DRAWING NUMBER:  
**B-10034**  
 REV. **6**