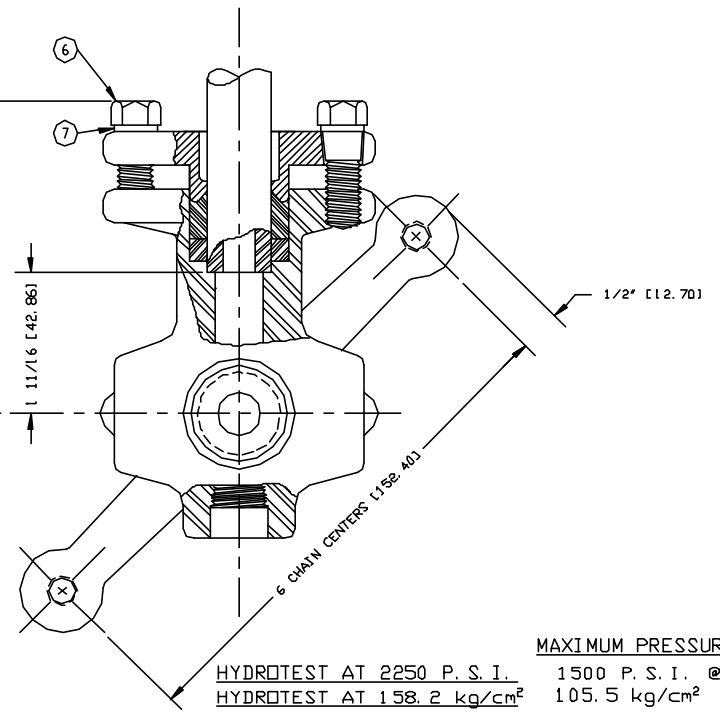
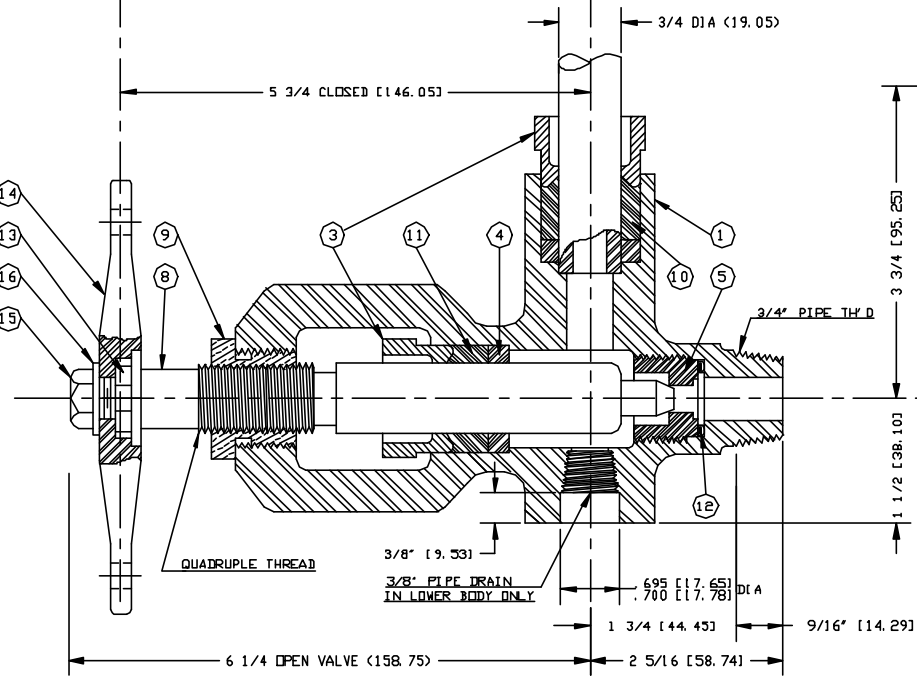
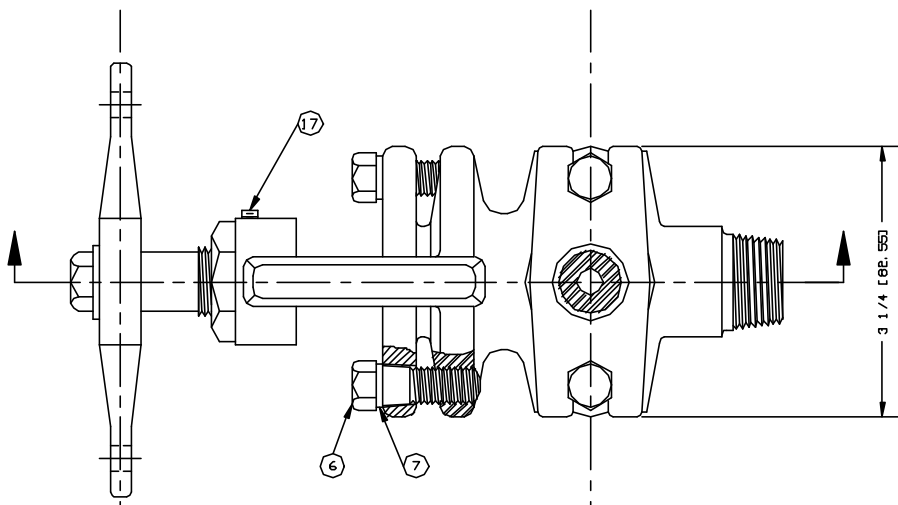


BILL OF MATERIAL - PER SET

ITEM	PART NO.	QUAN.	DESCRIPTION	MATERIAL	DWG NO.
1	SG754-1	1	VALVE BODY, LOWER(FORGED STL.)	ASTM A105	B-91 98
2	SG754-1A	1	VALVE BODY, UPPER(FORGED STL.)	ASTM A105	B-91 98
3	SG754-2	4	PACKING YOKE (DUCTILE IRON)	ASTM A395-55T	SG7035-A
4	SG754-3	2	PACKING WASHER	C 1018	SG7036-A
5	SG454-24	2	SEAT	420 SS	SG7017-A
6	X172341	8	CAP SCREW, HEX 7/16-14x1 1/2	STEEL - GR. B7	
7	X174212	8	PLAIN WASHER, 15/32 I. D. - 59/64 O. D.	STEEL	
8	SG854-1	2	STEM	303 SS	A-91 96
9	SG854-2S	2	STEM BUSHING	416 SST	A-91 96
10	SG854-5	2	NIPPLE PACKING CARTRIDGE	GRAFOIL	SG7021-A
11	SG854-4	2	STEM PACKING CARTRIDGE	GRAFOIL	SG7021-A
12	X175500	2	VALVE SEAT GASKET	MONEL	A-5418
13	BG403RS-1	2	SPROCKET	SINTERED IRON	A-7255
14	BG403RS-2	2	LEVER, 1 UPPER & 1 LOWER	MALL. IRON	A-7254
15	BG403RS-13	2	CAP SCREW, HEX 5/16-18x5/8	STEEL	
16	BG403RS-14	2	SHAKEPROOF LOCK WASHER, 5/16	STEEL	
17	X173120	2	ALLEN CUP POINT SET SCREW, 10-24x1/4	STEEL	

NOTE: LENGTH OF GLOSS DR GAGE OVERALL
EQUALS VALVE CENTERS LESS 3 1/4" (82.53)



LOWER VALVE SHOWN

DIMENSIONS IN [] ARE IN MILLIMETERS

REV	DESCRIPTION	DATE	BY	CHK	SIG
10	HYDROTEST WAS 4500 PSI	8-24-94	ST		
9	UPDATE MATERIAL SPECS.	8-2-93	FAS		
8	REDRAW	6/29/92	TRC		

UNLESS OTHERWISE NOTED
 TOLERANCES (X)
 DECIMAL & STEEL (0.002)
 FEN. FRACTIONAL (UP TO 1", NOT INCL.) (0.010)
 FEN. FRACTIONAL (3" INCL., UP TO 3") 1/64
 FEN. FRACTIONAL (3" INCL., UP TO 6") 1/32
 FEN. FRACTIONAL (6" INCL., UP TO 12") 1/16
 FEN. FRACTIONAL (12" & OVER) 1/8
 ANGLES
 MACHINE FINISH: 125 / OR SMOOTHER
 REMOVE BURRS AND SHARP EDGES

THE CLARK-RELIANCE CORP.
 STRONGSVILLE, OHIO

SG854 FORGED STEEL
 WATER GAGE VALVE

MAXIMUM PRESSURE RATING:
 HYDROTEST AT 2250 P. S. I. 1500 P. S. I. @ 600°F
 HYDROTEST AT 158.2 kg/cm² 105.5 kg/cm² @ 316°C

MATERIAL	
DRAWN D. CLINE	SCALE NONE
CHKD. S. TABAR	DATE 6/29/92
DRAWING NO.	REV.
B-9200	10