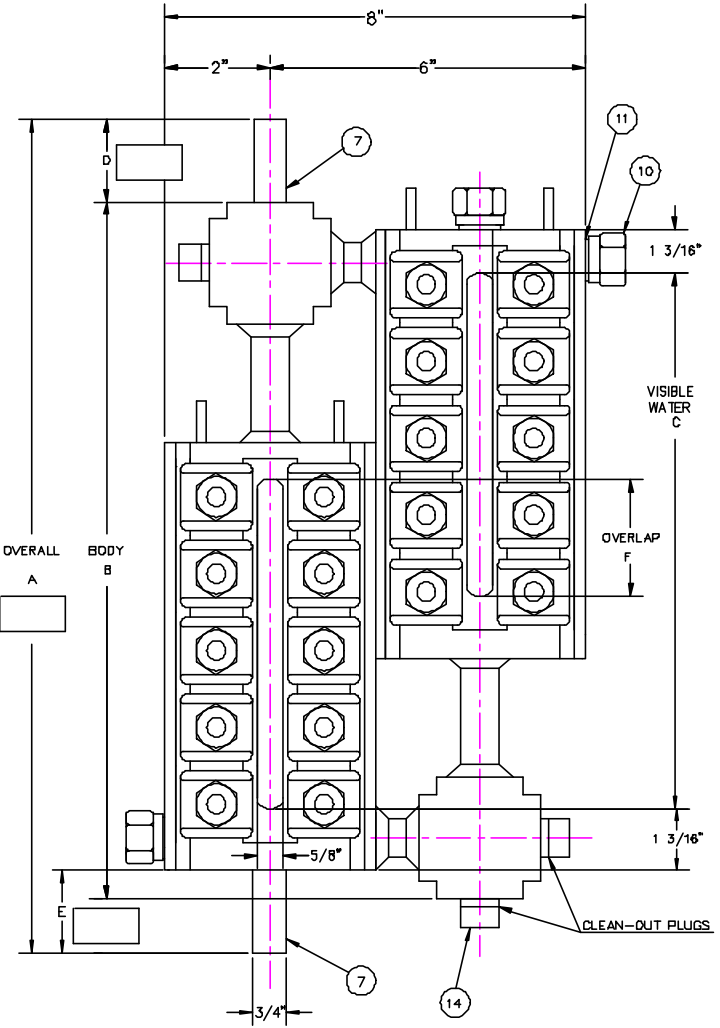


LIST OF MATERIAL PER WINDOW

ITEM	PART NO.	REQ	DESCRIPTION	MATERIAL	DWG. NO.
1	FG*-1	1	BODY	STEEL	
2	*G89 60	2	SEALING GASKET	GRAFOIL	B-11060
3	X173710	2	STUDS 7/16"-20 X 5 3/8" (FG900-1)	A193-B7	B-6567
4	PG+-2	2	COVER PLATES, 5/8" SLOT	STEEL	A-3749
5	M40-6		CLAMPS PATT. NO. 4892	STEEL	A-4892
6	X171451		HEX. NUTS, 7/16"-20 THR'D. (M40-7)	A194-2H	
7	PG4-***		NIPPLES	304SS	AB-15424
8	FG621+-1	2	GLASS-PLAIN FLAT (HIGH PRES.)	GLASS	A-3988
9	X174212		WASHERS, 7/8" O.D. X 15/32" I.D. X 1/16" THK. (N40-10)	STEEL	
10	E10-9	4	HEX. PLUGS, 5/8"-18 THR'D.	STEEL	A-6805
11	X175500	4	GASKETS, 7/8" X 5/8" I.D.	MONEL	A-5418
12	FG+0-3	2	UNITS MICA .007" TO .010" THICK	MICA	B-7701
13	V17352*	2	CUSHION GASKET	FIBER	
14	X171965	3	3/8" SQ. PIPE PLUG	STEEL	

TO COMPLETE PART NO.: * ADD GAGE NO. + ADD LAST NUMERAL OF GAGE NO
 *** ADD NIPPLE LENGTH IN INCHES AND EIGHTHS



STANDARD SIZES

GAGE NO.	A	B	C	D	E	QUAN. NO STUDS	MIN. SG854 W.G. CTRS
FG904		8 1/8"	6 5/8"			10	17
FG905		9 1/4"	7 3/4"			10	18
FG906		10 1/2"	9"			12	20
FG907		11 5/8"	10 1/8"			14	21
FG908		13 1/4"	11 3/4"			16	22
FG909		14"	12 1/2"			16	23

WITH SG854 SERIES VALVES D=3 1/8", E=2 1/4" (MIN.)
 WITH 403RS, 404RS SERIES VALVES D=1 3/4", E=1 3/8" (MIN.)

<http://www.northeastcontrolsinc.com>

WORKING STEAM PRESSURE 900 P.S.I.
 HYDROSTATIC TEST AT 1400 P.S.I.

STANDARD SIZES

GAGE NO	A	B	C	D	E	F	QUAN. NO. STUDS	MIN. SG854 W.G. CTRS
FG988		17 7/8"	15"			3"	24	26
FG977		20 3/8"	17 1/2"			2 3/4"	28	29
FG988		22 7/8"	20"			3 1/2"	32	31
FG989		24 3/8"	21 1/2"			3 1/2"	32	33

UNLESS OTHERWISE NOTED TOLERANCES (±) DECIMAL & STEEL FIN. FRACTIONAL 1/16" TO 1", .005 (EXCL.) C. 1/100 FIN. FRACTIONAL 1/8" (EXCL.) UP TO 3/8" 1/64 FIN. FRACTIONAL 1/2" (EXCL.) UP TO 6" 1/32 FIN. FRACTIONAL 1/4" (EXCL.) UP TO 1 1/2" 1/16 FIN. FRACTIONAL 1 1/2" & OVER 1/8 1/16 1/32 1/64		MATERIAL THE CLARK-RELIANCE CORP. FG900 SERIES MICA-PROTECTED FLAT GLASS GAGE B-7010		SCALE NONE DATE 10-15-72 REV. 13
L3 REVISED DR. WINDOW-ADDED FITTINGS 10-1-73 FAS L2 MATERIAL UPDATE - RETIRAL 10-5-92 LS REV DESCRIPTION DATE SEC	MAKEUP FINISH: 1/2" OR SHOOTER REMOVE BURRS AND SHARP EDGES			DRW'G NO. REV.