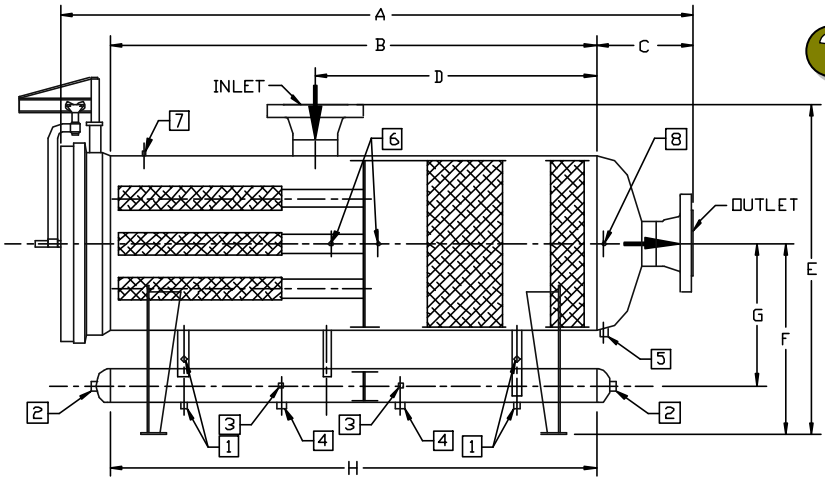
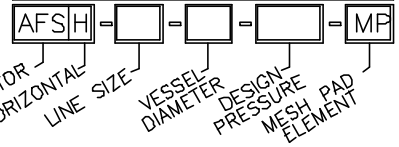


DRAWN: DEP CHECKED: KES SCALE: NONE DATE: 03/16/96 FILE NO: A400-16.DWG



- * FULL OPENING CLOSURE
- * MESH PADS
- * BARREL SUMP

HOW TO SPECIFY



STANDARD MATERIALS

HEADS	SA-516-70
SHELL	SA-106-B/C / SA-516-70
FLANGES	SA-105
FITTINGS	SA-105
PIPE	SA-106-B/C
SUPPORTS	SA-36 / SA-285
CLOSURE	CARBON STEEL

MODEL AFS-	VESSEL DIAMETER	SUMP DIAMETER	INLET/OUTLET	A(4)	B	C(4)	D	E(4)	F	G	H
2-6	6-5/8" OD	6-5/8	2"	90	74	10	35	43	34	19	74
2-8	8-5/8" OD	6-5/8	2"	92	74	10	35	45	35	20	74
3-10	10-3/4" OD	6-5/8	3"	97	78	11	37	47	36	21	78
4-12	12-3/4" OD	6-5/8	4"	101	79	11	38	49	37	22	79
4-14	14" OD	6-5/8	4"	102	79	12	38	51	38	22	79
6-16	16" OD	6-5/8	6"	112	84	14	41	55	39	23	84
6-18	18" OD	8-5/8	6"	112	84	15	41	59	42	25	84
8-20	20" OD	8-5/8	8"	117	90	15	44	61	43	26	90
8-24	24" OD	10-3/4	8"	123	90	16	44	67	47	29	90
10-26	26" ID	10-3/4	10"	129	96	17	47	69	48	30	96
10-28	28" ID	10-3/4	10"	129	96	17	47	71	49	31	96
12-30	30" ID	10-3/4	12"	135	96	18	50	73	50	32	96
12-32	32" ID	10-3/4	12"	135	96	18	50	75	51	33	96
14-34	34" ID	12-3/4	14"	142	102	19	53	79	54	35	102
16-36	36" ID	12-3/4	16"	147	108	19	56	81	55	36	108
16-42	42" ID	14	16"	159	108	21	56	88	59	40	108
18-48	48" ID	14	18"	160	114	24	59	96	62	43	114
20-54	54" ID	16	20"	182	120	26	62	104	67	47	120
24-60	60" ID	16	24"	196	129	27	68	110	70	50	129
24-66	66" ID	18	24"	201	129	29	68	118	75	54	129
24-72	72" ID	18	24"	203	129	30	68	124	78	57	129

NOTES:

- 1.) DESIGNED, FABRICATED AND STAMPED IN ACCORDANCE WITH ASME CODE SECTION VIII, DIVISION 1
- 2.) MESH PAD AVAILABLE IN 304-L & 316-L STAINLESS STEEL OPTIONAL ALLOYS UPON REQUEST
- 3.) SPECIAL MATERIALS, CONFIGURATIONS, AND HIGHER DESIGN PRESSURES AVAILABLE UPON REQUEST.
- 4.) ADD VALUES IN TABLE 1 TO DIM'S A, C, & E FOR FLANGE RATINGS HIGHER THAN 150#.
- 5.) FILTER SEPARATOR ALSO AVAILABLE WITH REDUCED CLOSURE AND/OR TWIN VERTICAL SUMPS
- 6.) DIMENSIONS ARE IN INCHES
- 7.) DIMENSION ARE NOT TO BE USED FOR CONSTRUCTION

TABLE 1: (SEE NOTE 4)

NOZZLE SIZE	ANSI B16.5 FLG		
	300#	600#	900#
2"	0	2	2
3"	1	3	3
4"	2	4	4
6"	2	6	6
8"	1	4	6
10"	2	6	8
12"	3	5	7
14"	4	9	10
16"	4	10	10
18"	3	8	10
20"	4	9	12
24"	5	11	14

TABLE 2. STANDARD OPENINGS

ITEM	QTY	SIZE	DESCRIPTION
1	4	3/4"	GAGE GLASS
2	2	2"	L.L.C.
3	2	1"	SYPHON DRAINS
4	2	2"	CLEANOUT
5	1	1"	HYDRO DRAIN
6	2	1/2"	DIFF PRESS
7	1	1/2"	PRESS GAGE
8	1	1/2"	INSTRMNT GAS

ALL STANDARD OPENINGS ARE COUPLINGS

A.S.M.E. CODE STAMPS

